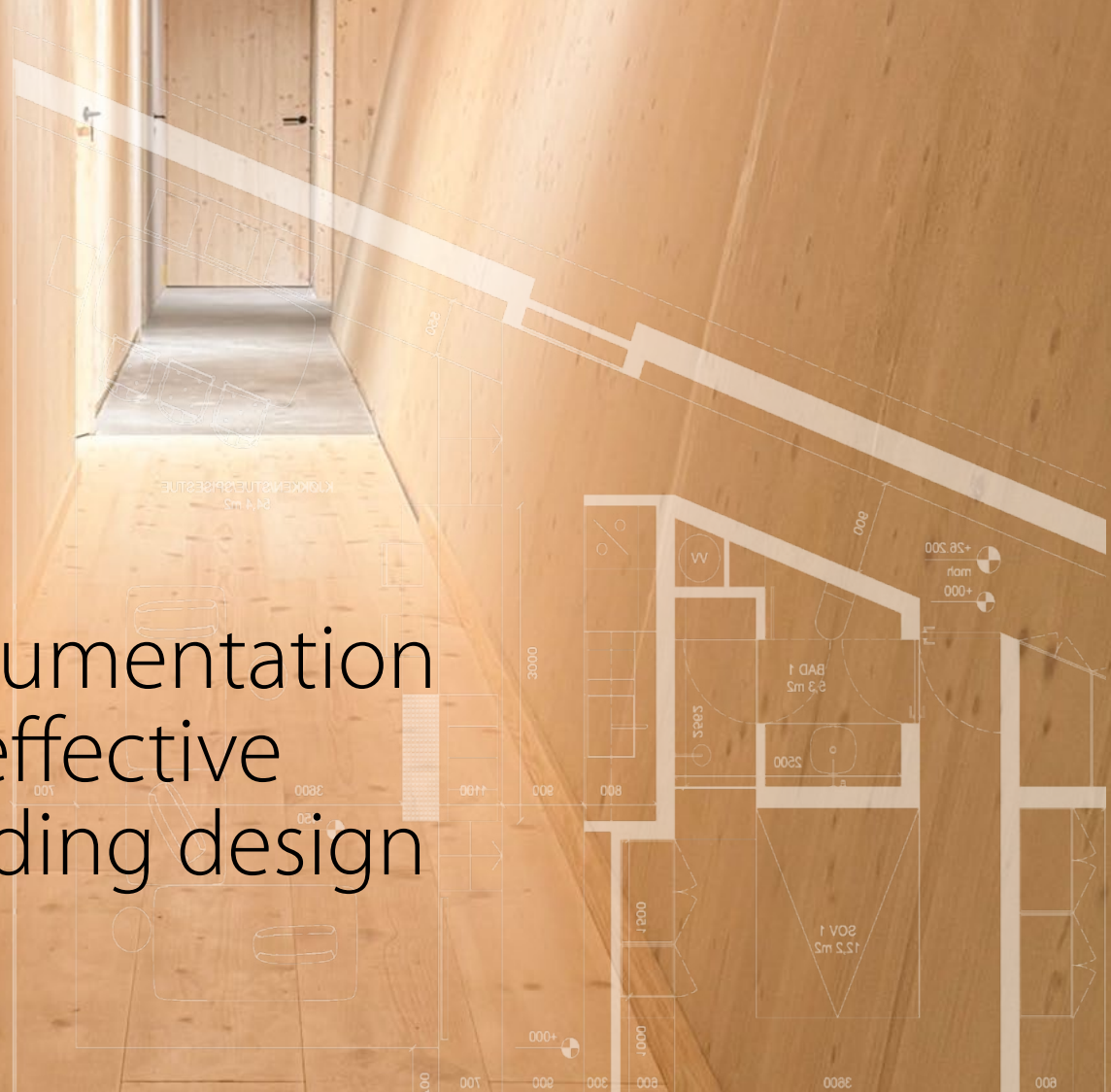
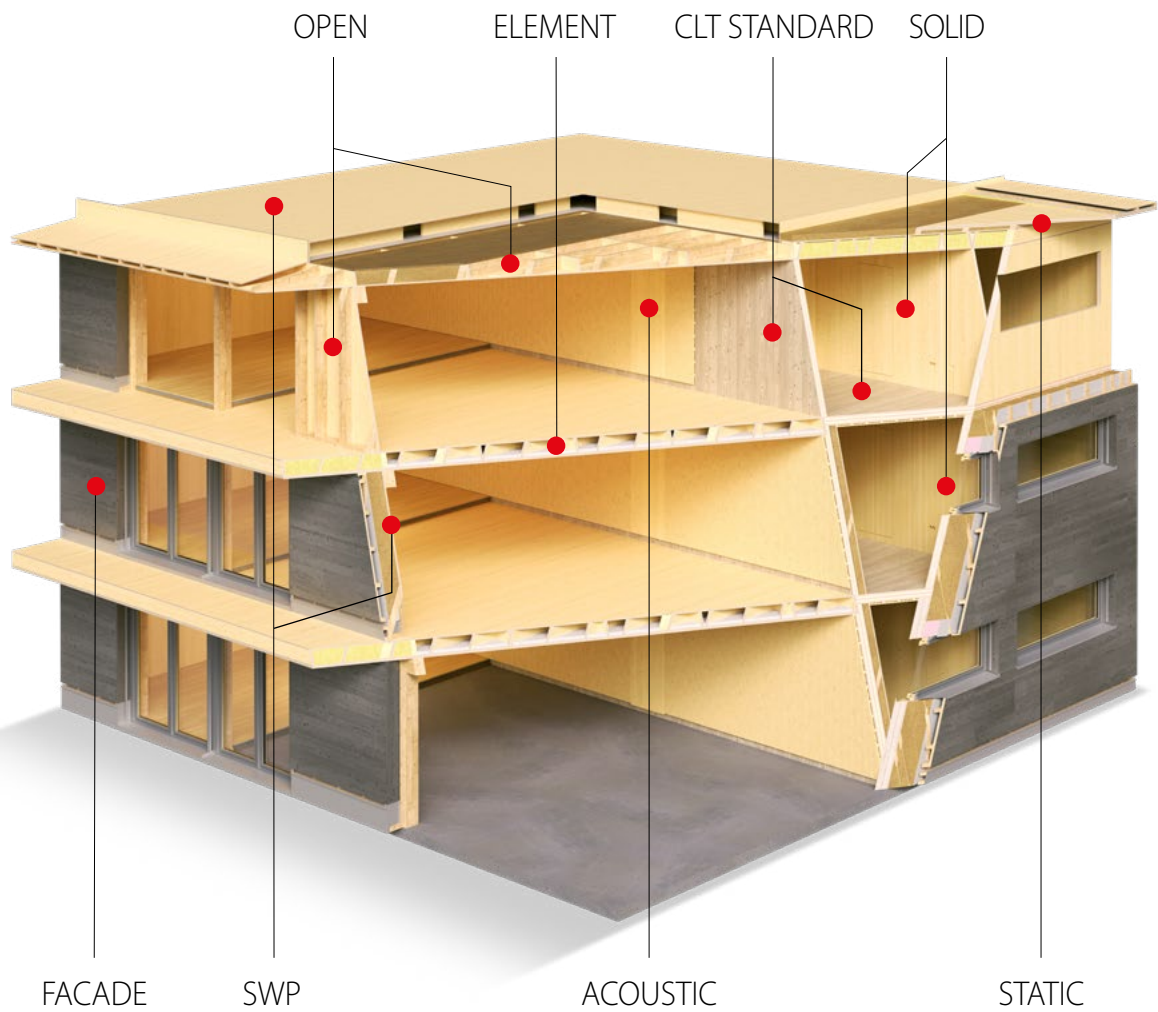


Documentation for effective building design





NOVATOP SYSTEM

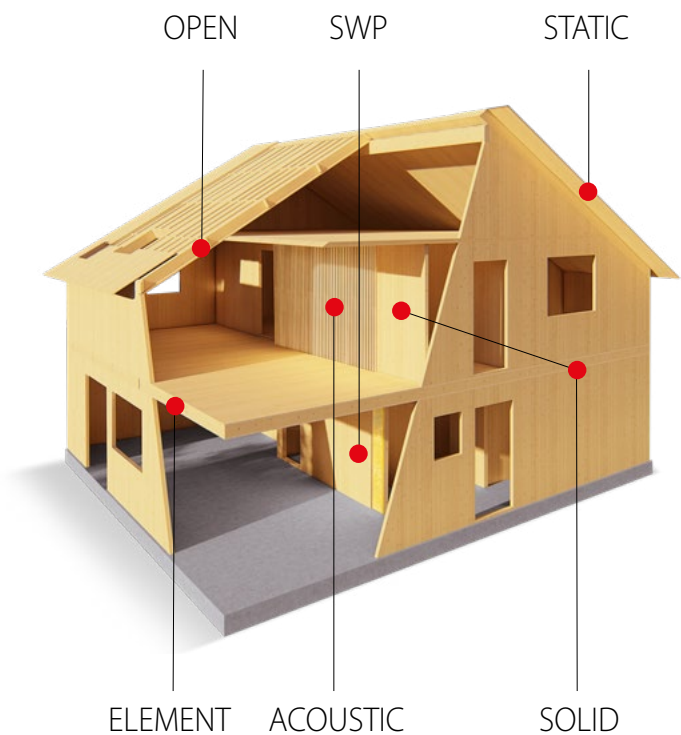
NOVATOP system is a comprehensive solution based on cross-laminated timber designed for the construction of both horizontal and vertical structures. It can also be used as a cladding material for both interior and exterior applications or in the manufacture of furniture and other interior elements.

NOVATOP is used in a wide range of construction applications—from single-family homes and apartment buildings to office buildings and large-span halls. It is also suitable for the construction of superstructures, extensions, and renovations. Thanks to its compatibility with other building materials and the uniform visual quality of individual elements, it offers a high degree of architectural and structural flexibility.



Contents

1	Product overview	4
2	Recommended use of NOVATOP products	6
3	Basic structural compositions	10
4	Approximate dimensioning of structures	16
5	Effective dimensions of elements	22
6	Qualities	24
7	Project timeline	26



Product Overview

QR code in the image = Product Technical Documentation.
For surface quality specifications see pp. 24–25.



SOLID

- > Solid cross-laminated timber – fully solid structure
- > Surface quality: premium visual or structural visual
- > Format up to 2.98 x 7.5 m



OPEN

- > Tensile bottom panel – load capacity, airtightness and fire resistance
- > Longitudinal ribs – stiffness
- > Rib types: DUO, BSH, Steico, LVL
- > Bottom panel quality: premium visual or structural visual
- > Format up to 2.45 x 12 m



CLT STANDARD

- > Cross-laminated wood – lamella using a dowetail joint – fully solid structure
- > Surface quality: non-visual
- > Format: height, max. 3.5 m, length, max. 12 m



ELEMENT

- > Tensile bottom panel – load capacity and fire resistance
- > Internal ribs (transverse + longitudinal) – shear load and stiffness
- > Pressure top panel – seals the structure
- > Rib types: SWP, BSH, LVL
- > Bottom panel quality: premium visual or structural visual
- > Format up to 2.45 x 12 m



STATIC

- > 5-layer cross-laminated panels
- > Surface quality: premium visual or structural non-visual
- > Format up to 2.5 x 6 (max. 12 m)



SWP

- > 3-layer cross-laminated panels
- > Surface quality: premium visual or structural non-visual
- > Format up to 2.5 x 6 m



EASY BOARD

- > 3-layer cross-laminated panels
- > Machining: Spring, groove, chamfered edge
- > Surface quality: premium visual
- > Standard format 0.625 x 2.5, max. 1.25 x 5 m



FACADE

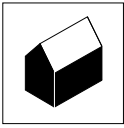
- > 3-layer cross-laminated panels
- > Brushing, glazing paints
- > Surface quality: premium visual
- > Format standard 0.604 x 2.5, max. 1.229 x 5 m



ACOUSTIC

- > Acoustic panels
- > 3-layer panel, milled or drilled
- > Absorber (fibreboard, mineral, fabric)
- > Surface quality: premium visual
- > Standard format 0.625 x 2.5, max. 2.5 x 5 m

Recommended use of NOVATOP products



Recommended use of NOVATOP products



SOLID

- > Visual applications, including the integration of concealed electrical installations, without major restrictions
- > High demands on accuracy of execution
- > Ensuring 100% airtightness of the structure
- > Fire resistance up to REI 60

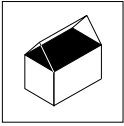
CLT STANDARD

- > Non-visual applications (SDK cladding, Fermacell, Acoustic, etc.)
- > Higher loads (multi-storey buildings, > 3 floors)
- > For visual applications CLT + SWP cladding
- > Fire resistance REI 60 under high loads

OPEN

- > Visual applications
- > Simpler buildings with lower demands on physical acoustics (e.g. recreational facilities, ancillary buildings, lightweight cladding)
- > Compact and effective structure thickness – ideal for ventilated facades
- > Fire resistance up to REI 60





Ceiling structure

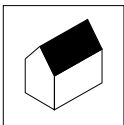


ELEMENT

- > Visual and non-visual applications
- > Medium to larger spans 4–10 m
- > With limestone fill, it meets demanding requirements for physical acoustics
- > Fire resistance 30–60

CLT STANDARD

- > Non-visual applications
- > Economical option for smaller spans < 5 m
- > Spatially stressed elements
- > For visual applications: combination of CLT + SWP cladding



Roof structure



Ventilated roof

OPEN

- > Visual applications
- > Diffusionally open compositions without the use of vapour barrier membranes
- > Fire resistance REI 30

Single-shell roof

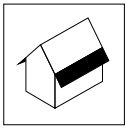
ELEMENT

- > Visual and non-visual applications
- > Medium to larger spans 4–10 m
- > Fire resistance REI 30–60

CLT STANDARD

- > Visual and non-visual applications
- > Medium to larger spans 4–10 m
- > For visual applications: combination of CLT + SWP cladding

Recommended use of NOVATOP products



Roof overhangs



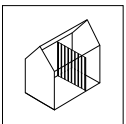
ELEMENT, OPEN

Extension of the load-bearing panels

- > Simple solution with higher stiffness (higher overhang thickness)
- > Possibility of visual application in soffits

STATIC

- > Subtle minor overhangs
- > Possibility of visual application in soffits



Interior – cladding and accessories



SWP

- > Visual and non-visual applications
- > Decking, cladding, floors, accessories, furniture

EASY BOARD

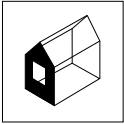
- > Visual and non-visual applications
- > Cladding, floors, soffits, decking

ACOUSTIC

- > Visual applications
- > Cladding (walls, ceilings, screens) for the solutions of architectural acoustics

Fireproof coating

- > SWP, EASY BOARD and ACOUSTIC cladding can be coated with reaction to fire class B-s1, d0 in production.
- > Safe cladding for interiors and covered exteriors (even for larger buildings)



Exterior – cladding and accessories



FACADE

- > Visual applications
- > Cladding for covered and exposed exteriors
- > Facade applications, soffits



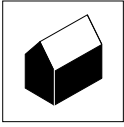
COLUMNS AND GIRDERS

The NOVATOP system can be flexibly combined with common structural elements:

- > BSH
- > DUO/TRIO
- > LVL
- > Steico girders

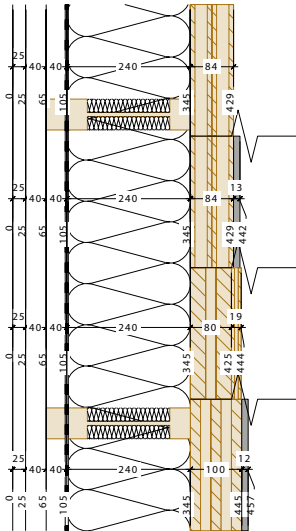
Mainly used for: local supports, bridging joists, structural reinforcement

Basic structural compositions

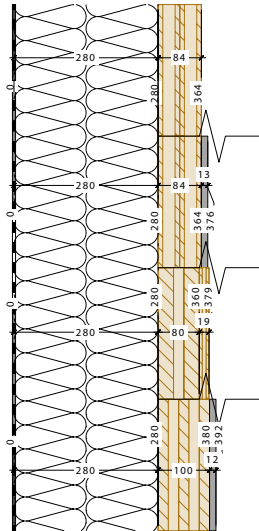


External walls

SOLID / CLT STANDARD



$R_w = 51-53$ dB
 $U = 0,155$ W/m²K



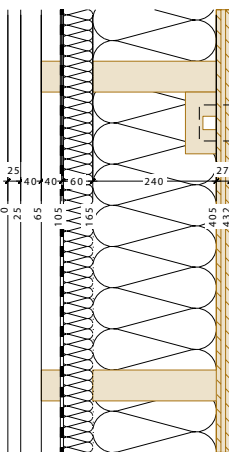
- SOLID
- SOLID + OPLÁŠTĚNÍ
- CLT + SWP
- CLT + OPLÁŠTĚNÍ

$R_w = 50-52$ dB
 $U = 0,14$ W/m²K

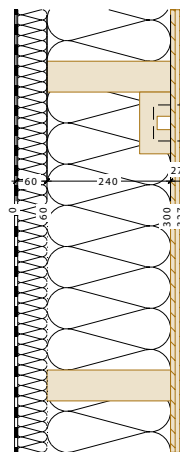
Complete overviews of the compositions, including their technical parameters, are provided in the Structural Details brochure.



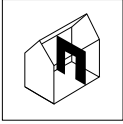
OPEN



$R_w = 45$ dB
 $U = 0,15$ W/m²K

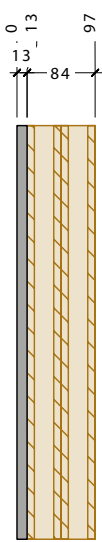


$R_w = 44$ dB
 $U = 0,15$ W/m²K

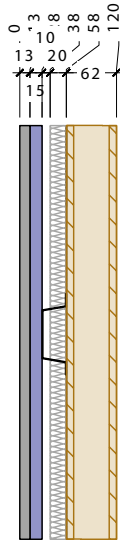


Internal walls

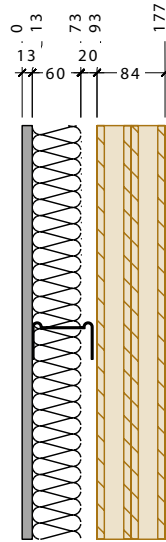
SOLID



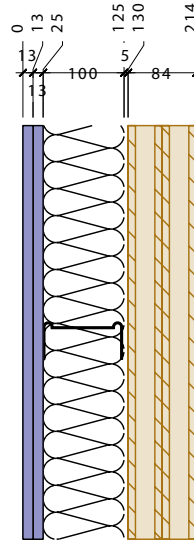
$R_w = 33$ dB



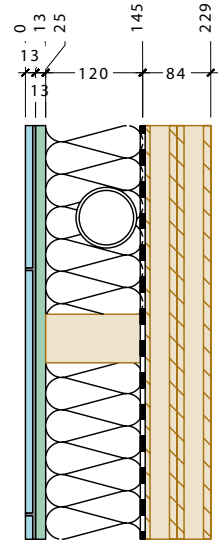
$R_w = 47$ dB



$R_w = 51$ dB

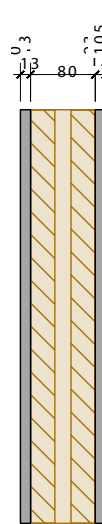


$R_w = 55$ dB

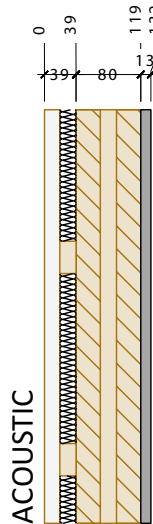


$R_w = 50$ dB

CLT STANDARD

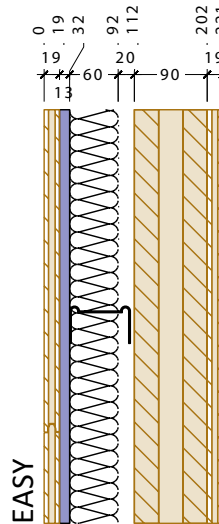


$R_w = 36$ dB



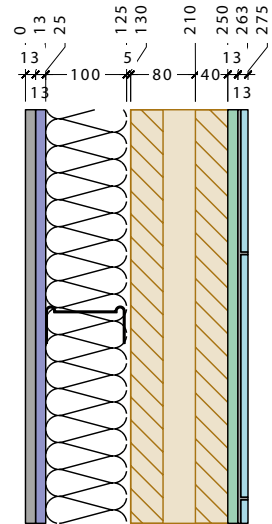
ACOUSTIC

$R_w = 39$ dB



EASY

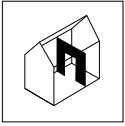
$R_w = 55$ dB



$R_w = 58$ dB

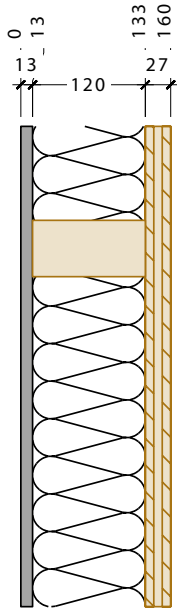
Complete overviews of the compositions, including their technical parameters, are provided in the Structural Details brochure.





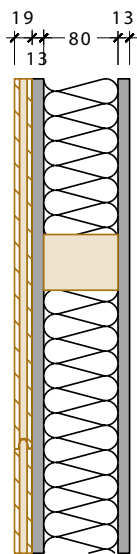
Internal walls

OPEN

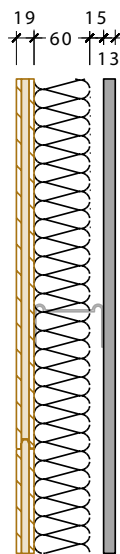


$R_w = 45 \text{ dB}$

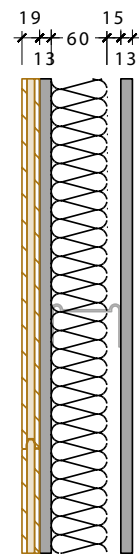
EASY BOARD



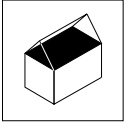
$R_w = 48 \text{ dB}$



$R_w = 48 \text{ dB}$



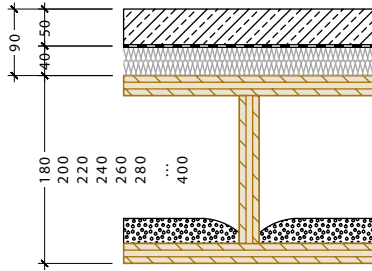
$R_w = 54 \text{ dB}$



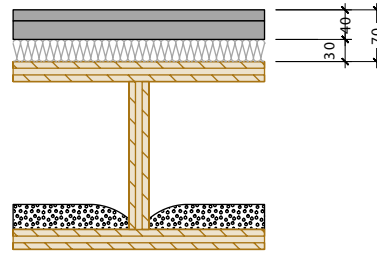
Ceilin

Family homes

ELEMENT A

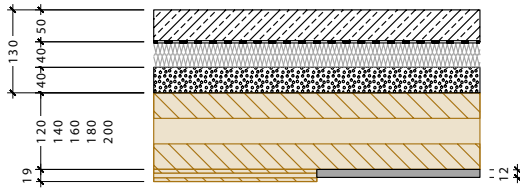


$R_w = 58$ dB
 $L_{n,w} = 55$ dB

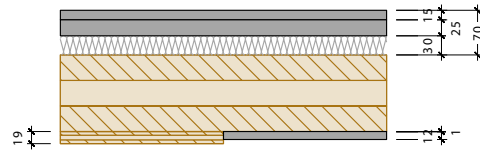


$R_w = 55$ dB
 $L_{n,w} = 60$ dB

CLT STANDARD



$R_w = 57$ dB
 $L_{n,w} = 56$ dB

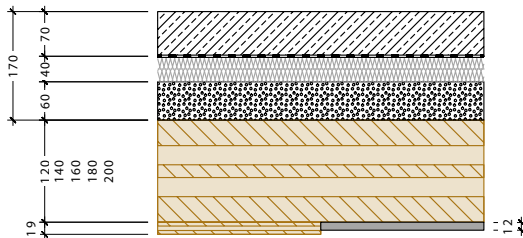


$R_w = 50$ dB
 $L_{n,w} = 69$ dB

3

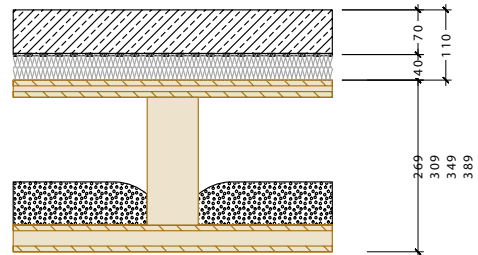
Public buildings, apartment buildings

CLT STANDARD



$R_w = 58$ dB
 $L_{n,w} = 51$ dB

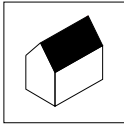
ELEMENT D



$R_w = 62$ dB
 $L_{n,w} = 48$ dB

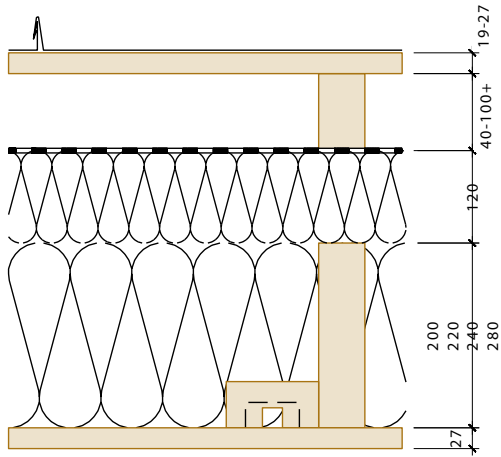
Complete overviews of the compositions, including their technical parameters, are provided in the Structural Details brochure.



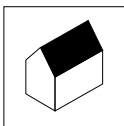


Ventilated roofs

OPEN

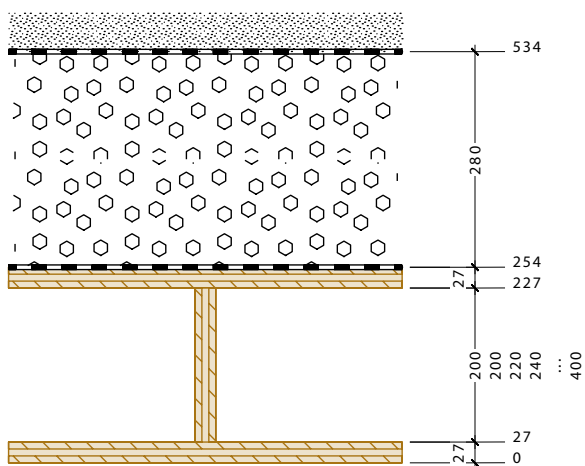


$R_w = 46 \text{ dB}$
 $U = 0,13 \text{ W/m}^2\text{K}$



Single-shell roofs

ELEMENT

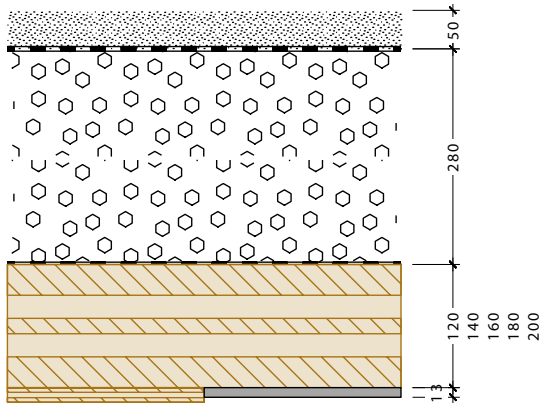


$R_w = 44 \text{ dB}$
 $U = 0,1 \text{ W/m}^2\text{K}$

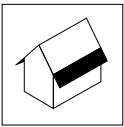
Complete overviews of the compositions, including their technical parameters, are provided in the Structural Details brochure.



CLT STANDARD



$R_w = 45 \text{ dB}$
 $U = 0,1 \text{ W/m}^2\text{K}$

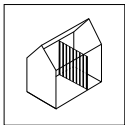


Roof overhangs

Use, design and anchoring are specified in the NOVATOP STATIC technical documentation.



3



Cladding, accessories and furniture

Use, design and anchoring are specified in the relevant technical documentation.

> NOVATOP SWP



> NOVATOP EASY BOARD

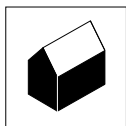


> NOVATOP ACOUSTIC



Approximate dimensioning of structures

Warning: The values provided are indicative. The design of a specific dimension must always be assessed individually according to the static load and function of the structure.



Wall structures

Detailed dimensioning is provided in the product technical documentation.

SOLID

- > Non-load-bearing partitions and partition structures: **SOLID 62 mm**
- > 1–2 floors, usual load: **SOLID 84 mm**
- > 3 floors, higher load: **SOLID 124 mm**

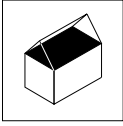


CLT STANDARD

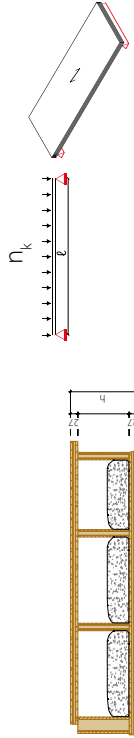
- > Non-load-bearing partitions and partition structures: **CLT 60–80 mm**
- > 1–2 floors, usual load: **CLT 90 mm / CLT + SWP 99 mm**
- > 3–4 floors, higher load: **CLT 120–140 mm / CLT + SWP 119–139 mm**
- > Taller buildings and higher loads: **dimensions are designed individually with a continuous increase in thickness (e.g. 140 mm, 160 mm and more)**

OPEN

- > The dimension is mainly influenced by the composition of the thermal insulation
- > Common use of 1–2 floors: **227–267 mm (e.g. DUO 200 + SWP 27 mm to DUO 240 + SWP 27 mm)**
- > Auxiliary buildings and recreational facilities, garages: **cca 187 mm (např. DUO 160 + SWP 27 mm)**



Stropní konstrukce – NOVATOP ELEMENT



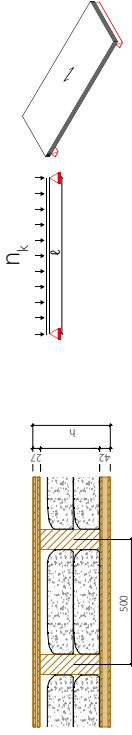
Element A REI30-45: TYPE A2
Preliminary dimensioning with limestone fill 40 kg/m^2 , $w_{inst} \leq \ell/300$

Permanent load (g_k)	Imposed load (n_k)	Span / Composition 27 (9/9/9) - 27 (9/9/9)																
		3	3.5	4	4.5	5	5.5	6	6.5	7	7.5	8	8.5	9	9.5	10	10.5	
1	1,5	160	160	160	160	160	180	200	220	240	260	280	300	320	340	360	380	400
	2	160	160	160	160	180	200	220	240	260	280	300	320	340	360	380	400	-
	3	160	160	160	180	200	220	240	260	280	300	320	340	360	400	-	-	-
	4	160	160	160	180	200	240	260	280	300	320	340	360	400	-	-	-	-
	5	160	160	180	200	220	260	280	300	340	360	400	-	-	-	-	-	-
1,5	1,5	160	160	160	160	180	200	220	240	260	280	300	320	340	360	380	400	-
	2	160	160	160	160	180	200	220	260	280	300	320	340	360	380	400	-	-
	3	160	160	160	180	200	220	240	260	280	300	320	340	360	380	-	-	-
	4	160	160	160	200	220	240	260	300	320	360	380	-	-	-	-	-	-
	5	160	160	180	200	240	260	280	320	340	380	-	-	-	-	-	-	-
2	1,5	160	160	160	160	180	200	220	240	260	280	300	320	340	360	380	400	-
	2	160	160	160	180	200	220	240	260	280	300	320	340	360	400	-	-	-
	3	160	160	160	180	220	240	260	300	320	340	380	400	-	-	-	-	-
	4	160	160	180	200	220	260	280	300	340	360	400	-	-	-	-	-	-
	5	160	160	180	220	240	260	300	320	360	400	-	-	-	-	-	-	-
2,5	1,5	160	160	160	180	200	220	240	260	280	300	320	340	360	380	400	-	-
	2	160	160	160	180	200	220	240	260	280	300	320	360	380	-	-	-	-
	3	160	160	180	200	220	260	280	300	340	360	400	-	-	-	-	-	-
	4	160	160	180	200	240	260	300	320	360	380	-	-	-	-	-	-	-
	5	160	180	200	220	240	280	300	340	380	400	-	-	-	-	-	-	-
3	1,5	160	160	160	180	200	240	260	280	300	320	340	360	380	400	-	-	-
	2	160	160	160	180	200	240	260	280	300	320	360	380	-	-	-	-	-
	3	160	160	160	180	200	240	260	300	320	360	380	-	-	-	-	-	-
	4	160	160	160	180	200	240	260	280	300	340	360	380	-	-	-	-	-
	5	160	180	200	220	240	280	300	340	380	400	-	-	-	-	-	-	-

□ Most common applications

See Element Technical Documentation, p. 15

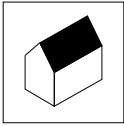
Element D REI60: TYPE D
Preliminary dimensioning with limestone fill 80 kg/m³, w_{inst} ≤ 2/300



Permanent load (g _k)	Imposed load (n _k)	Span / Composition 27 (9/9/9) + 42 (9/24/9)													
		4	4,5	5	5,5	6	6,5	7	7,5	8	8,5	9	9,5	10	
1,5	1,5					269	269	269	309	309	309	349	349	389	X
	2,5				269	269	309	309	349	389	X	X	X	X	X
	4	269	269	269	269	309	349	349	389	X	X	X	X	X	X
	5	269	269	309	309	349	349	389	389	X	X	X	X	X	X
2	1,5					269	269	269	309	309	309	349	349	389	X
	2,5				269	269	309	309	349	349	389	X	X	X	X
	4	269	269	269	309	309	349	389	389	X	X	X	X	X	X
	5	269	269	309	309	349	349	389	389	X	X	X	X	X	X
3	1,5				269	269	269	309	309	349	349	389	389	X	X
	2,5		269	269	269	309	309	349	349	389	X	X	X	X	X
	4	269	269	309	309	349	349	389	389	X	X	X	X	X	X
	5	269	309	309	349	389	389	X	X	X	X	X	X	X	X

Most common applications

See Element Technical Documentation, p. 17

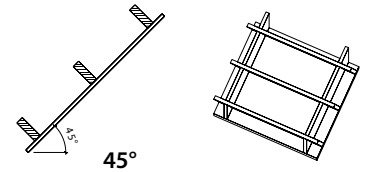
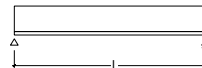


Roof structure

OPEN

- > Typically designed for spans of up to 6 m
- > Horizontal panel orientation is common

OPEN – preliminary design of the height mm)
– girders in the transversal direction, roof slope of 45°



$$w_{inst} \leq L/300, w_{fin} \leq L/250$$

Other permanent load g_k (kN/m ²)	Variables loads (pressure only) q_k (kN/m ²)	Panel span L (m)										
		3,0	3,5	4,0	4,5	5,0	5,5	6,0	6,5	7,0	7,5	8,0
0,5	0,75	227	227	227	227	227	227	227	227	247	267	
	1,00	227	227	227	227	227	227	227	247	267		
	1,50	227	227	227	227	227	227	247	267			
	2,00	227	227	227	227	227	247	267				
1,0	0,75	227	227	227	227	227	227	227	247	267		
	1,00	227	227	227	227	227	227	247	267			
	1,50	227	227	227	227	227	247	267				
	2,00	227	227	227	227	227	247	267				
2,0	0,75	227	227	227	227	227	247	267				
	1,00	227	227	227	227	227	247	267				
	1,50	227	227	227	227	247	267					
	2,00	227	227	227	247	267						

4

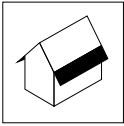
□ Most common applications



See Open Technical Documentation, p. 9

ELEMENT:

- > see ceilings p. 13



Roof overhangs

The design of the overhang must always be individually assessed by static calculation (e.g. in static software or by an authorized structural engineer).

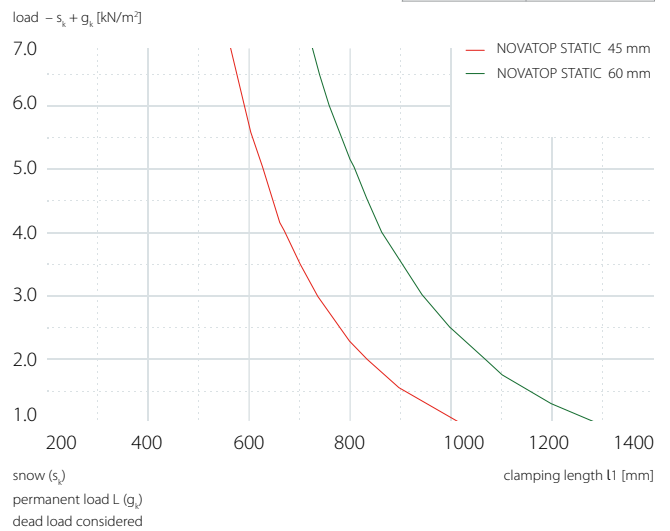
ELEMENT, OPEN

- > Extension of the load-bearing panels (ELEMENT, OPEN)
- > Common solution for cantilever overhangs in the range of approx. 1.0–2.5 m in one direction

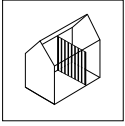
STATIC

- > Subtle overhang solutions

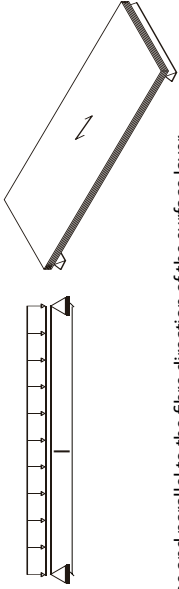
Preliminary dimensioning I/450 I1 : c = 1 : 1



See STATIC Technical Documentation, p. 7–10



Decking, cladding, accessories, furniture



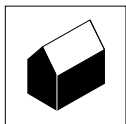
Girder of a single field: Load perpendicular to the panel plane and parallel to the fibre direction of the surface layer

SWP

Permanent load	Imposed load		Span [mm]	Span [mm]						
	Cat.	q_k [kN/m ²]		500	1000	1500	2000	2500	3000	
1,0 [kN/m ²]	A	1,5	16-60b	22-60b	32-60b	42-60	45-60b	60a-60b	60b	
										C
	C	4,0		42-60	45-60b	60a-60b	-	-		
				C	5,0	50-60	45-60b	-	-	
	1,5	A		1,5	16-60b	22-60b	42-60b	50-60b	45-60b	60a-60b
C			3,0							
		C		4,0		27a-60b	45-60b	60a-60b	-	-
						C	5,0	27b-60b	45-60b	-
2,0		A	1,5	16-60b		27a-60b	42-60b	60	60a-60b	60a-60b
	C				3,0					
		C	4,0			27b-60b	45-60b	60a-60b	-	-
						C	5,0	32-60b	45-60b	-

Effective dimensions of elements

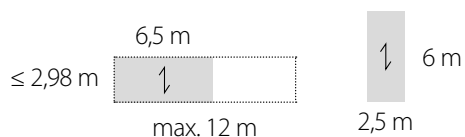
The recommended manufacturing and design limits are based on requirements for efficiency in manufacturing, transportation, and installation.



Wall structures

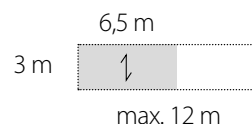
SOLID

- > Standard height of the wall (mm): < 2.98 m
- > Greater heights: 4, 5, 6 m
- > Width: optimally 6.5 m (for transport reasons), maximum 12 m



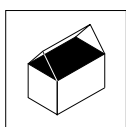
CLT STANDARD

- > Standard height of the wall (mm): < 3.5 m
- > Traffic restrictions: 3.0 m
- > Width: optimally 6.5 m (for transport reasons), maximum 12 m



OPEN

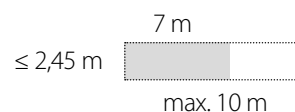
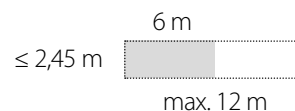
- > Standard height of the wall (mm): < 2.8 m
- > Greater heights: 3, 4, 5, 6 m (width: 2.5 m)
- Width 5 m (max 12 m)

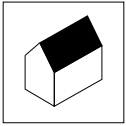


Ceiling structure

ELEMENT / OPEN

- > Standard panel length: 6.0 m
- > Greater lengths
 - Length connection for an extra charge (≤ 12.0 m)
 - Long panels with a continuous lamella: 7.0 m (most common), 8.0 m, max 10.0 m

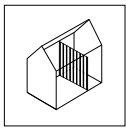
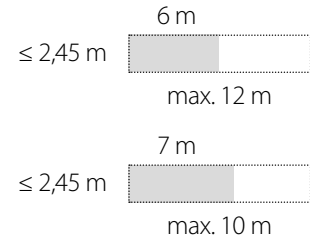




Roof structure

ELEMENT / OPEN

- > Standard panel length: 6.0 m
- > Greater lengths
 - Length connection for an extra charge (< 12.0 m)
 - Long panels with a continuous lamella: 7.0 m (most common), 8.0 m, max 10.0 m



Cladding, accessories and furniture



SWP

- > Standard formats: 2,100 × 5,000, 2,500 × 5,000, 2,500 × 6,000 m
- > Option to divide into smaller sizes (e.g., 1/2, 1/4, etc.)

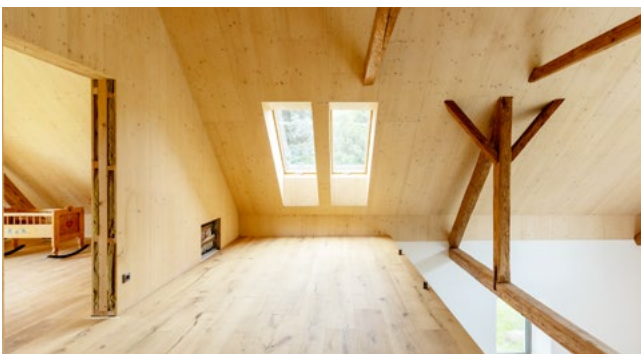


5



Acoustic

- > Standard formats (mm): 625 × 2,500, 625 × 3,000 mm



EASY BOARD

- > Standard formats (mm): 615 × 2,490; 615 × 2,990 mm



Quality



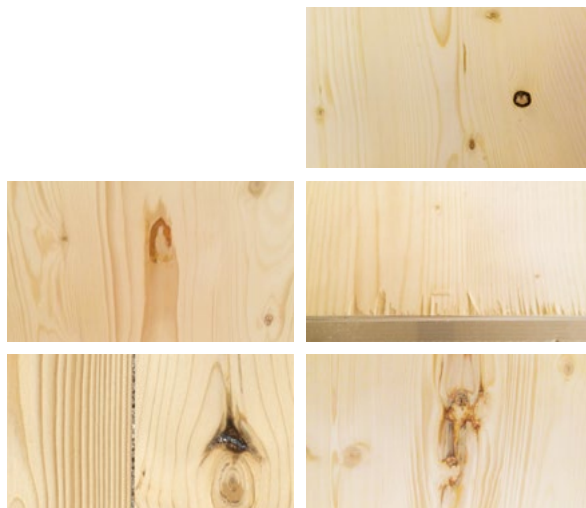
Premium visual quality (B)

- > highest visual standard
- > available for an extra charge
- > for more demanding visual applications in interiors



Structural visual quality (C+)

- > for less demanding visual applications





CLT no-visual quality (NSI)

- > intended exclusively for non-visual applications
- > suitable for structures intended for cladding (e.g. SDK, Fermacell, etc.)



Project timeline

The planning documents define the minimum requirements that the supplier of the project documentation is obligated to meet and for which they are responsible. The individual planning stages outline the subsequent steps in the project preparation process, including their estimated time requirements. The actual duration of each stage depends primarily on the scope and technical complexity of the order, as well as on current production capacities. Custom manufacturing requires a high degree of preliminary coordination and the preparation of project documentation well in advance.

Notice: from the final approval of the production documentation (point 9), a lead time of 6–14 weeks must be allowed for the preparation and production of the panels.



For the timely delivery of your order, the most important factors are:

- > joint planning
- > strict adherence to deadlines
- > mutual cooperation



■ We need from you

■ You will receive from us

1 A study of the project

2 Preliminary calculation (Can be performed based on the project study)

3 The project documentation must include:

1. 3D model or 2D drawings
(We prefer the documents to be processed in a 3D model and the following formats:
cadwork, ifc, sat, stp, btl.)
2. Floor plans
3. Sections
4. Views of individual walls, ceilings and roof structures
5. Wall thicknesses and element specifications
6. Indication of visual quality and fibre orientation
7. Indication of electrical wiring
8. Requirements for fire resistance (REI), sound and thermal insulation
9. Structural details (types of connections and sequences)
10. Connecting elements
11. Warning about non-standard execution
12. Preliminary assembly procedure (wall numbering)
13. Static report

4 Consultations and recommendations on project documentation

5 Ongoing quote

6 Final project documentation (Must include see point 3.)

7 Ongoing quote

8 Drawings for approval

3D model, 2D drawings – panel distribution, how they will be delivered to the construction site, installation plan

9 Final approval of drawings

The documents for production documentation cannot be changed after approval!

10 Final quote

11 Production documentation

Detailed drawing and panel distribution into individual parts (sent to the client only for information)

12 Production of panels

The production process can be started if the drawings are approved, the contract is signed and the deposit is paid.

13 Shipping Department

The transport method is selected according to the final formats of the individual panels, particularly with the connection to the unloading and the assembly. The delivery includes a list of packages and instructions for loading the truck.



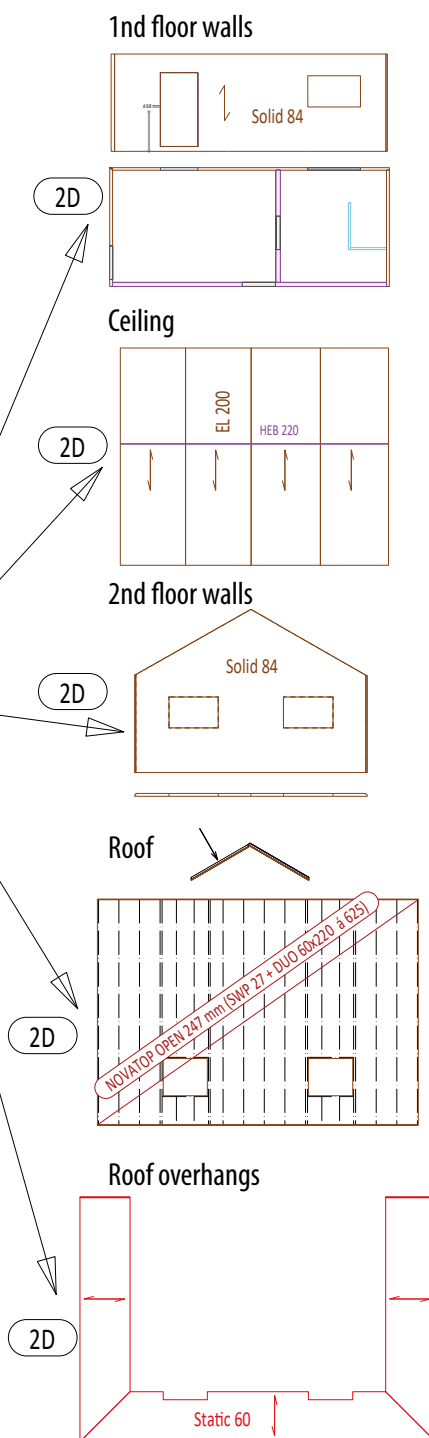
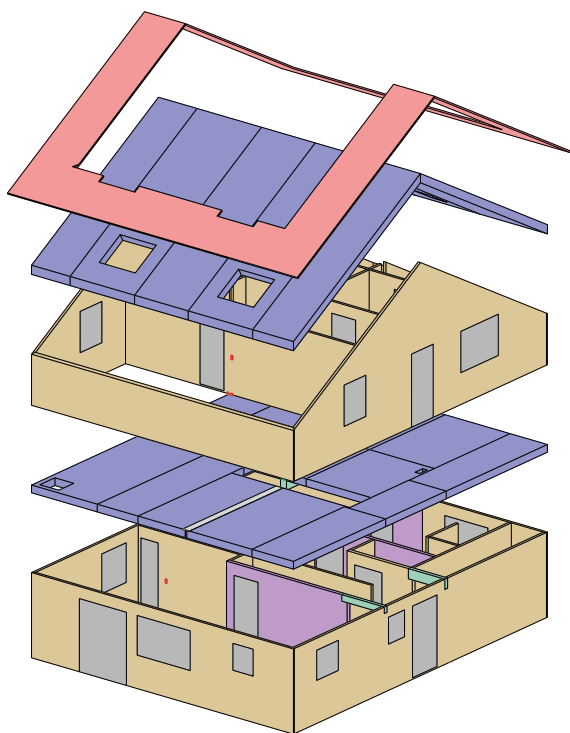
7

What do ideal documents look like?

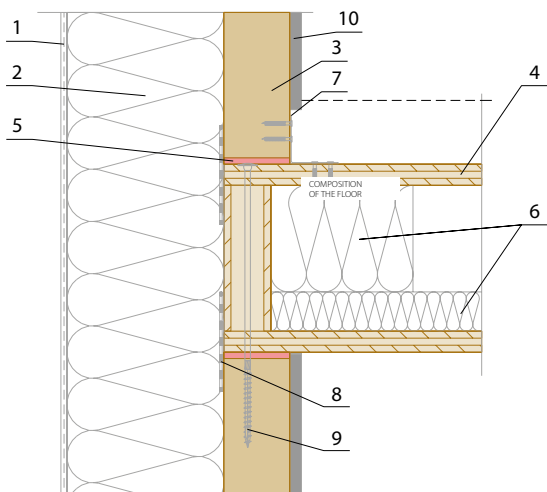
■ The project documentation must include:

1. 3D model or 2D drawings
(We prefer the documents to be processed in a 3D model and the following formats: CadWork, ifc, sat, stp, BTL.)
2. Floor plans
3. Sections
4. Views of individual walls, ceilings and roof structures
5. Wall thicknesses and element specifications
6. Indication of visual quality and fibre orientation
7. Indication of electrical wiring
8. Requirements for fire resistance (REI), sound and thermal insulation
9. Structural details
(types of connections and sequences), see the catalogue of structural details
10. Connecting elements
11. Warning about non-standard execution
12. Preliminary assembly procedure (wall numbering)
13. Static report

Example of a complete 3D model



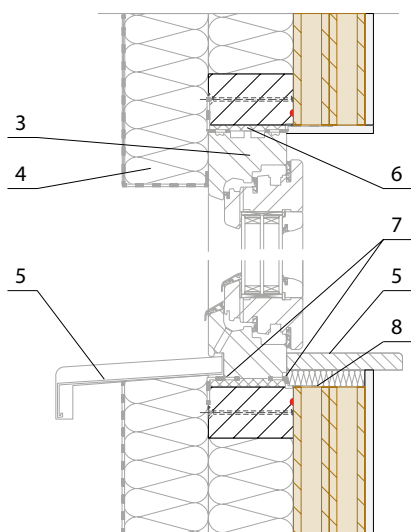
Examples of structural details



- LEGEND:**
1. FACADE PLASTER
 2. FIBREBOARD
($\lambda = 0,043 \text{ W/mK}$, $q = 180 \text{ kg/m}^3$)
(STEICOprotect TYPE H)
//MINERAL INSULATION
($\lambda = 0,040 \text{ W/mK}$, $q = 100 \text{ kg/m}^3$)
(ISOVER - TF PROFI)
 3. **WALL NOVATOP SOLID**
 4. **CEILING NOVATOP ELEMENT**
 5. ROTHOBLAAS ACOUSTIC PROFILE (6 mm)
 6. FIBREBOARD
($\lambda = 0,036 \text{ W/mK}$, $q = 60 \text{ kg/m}^3$)
(STEICOflex)
 7. BMF CARPENTER'S SQUARE
ROUND HEAD NAIL, SCREW
 8. AIRTIGHT EXECUTION OF THE JOINT
 9. SCREW
 10. FERMACELL

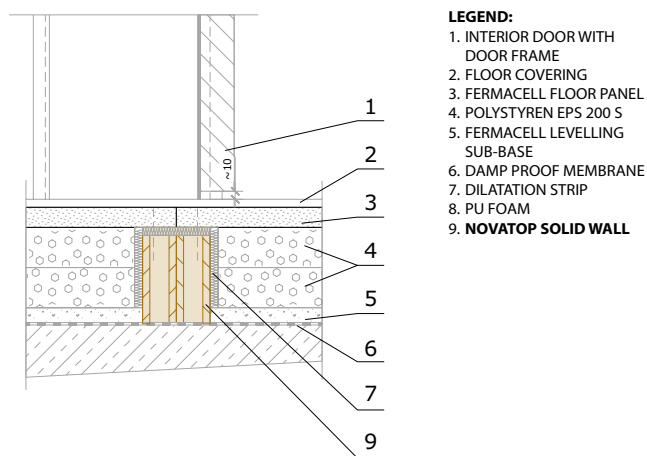
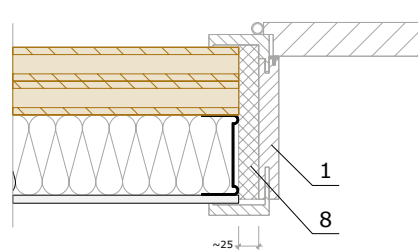


ND 201a



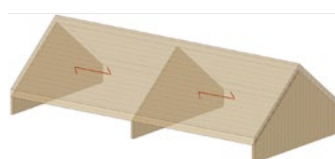
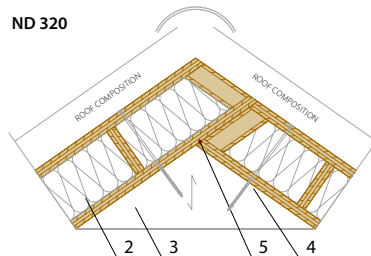
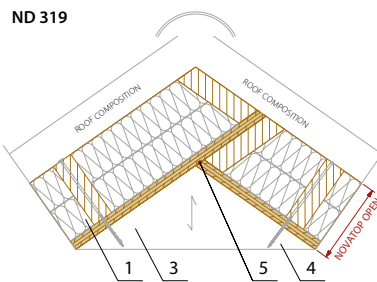
- LEGEND:**
1. **NOVATOP SOLID WALL**
 2. BEAM
 3. WINDOW
 4. THERMAL INSULATION
 5. WINDOWSILL
 7. WINDOW TAPE
 8. AIRTIGHT EXECUTION OF THE JOINT

ND 403



- LEGEND:**
1. INTERIOR DOOR WITH DOOR FRAME
 2. FLOOR FRAME
 3. FERMACELL FLOOR PANEL
 4. POLYSTYREN EPS 200 S
 5. FERMACELL LEVELLING SUB-BASE
 6. DAMP PROOF MEMBRANE
 7. DILATATION STRIP
 8. PU FOAM
 9. **NOVATOP SOLID WALL**

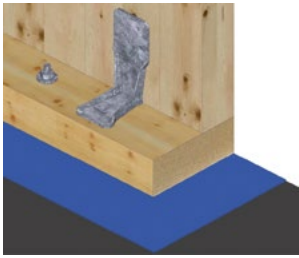
ND 400



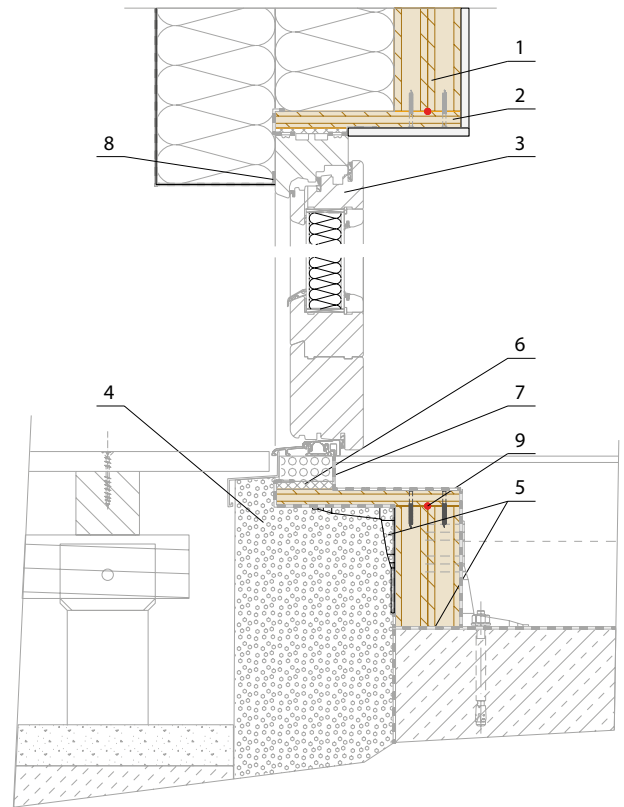
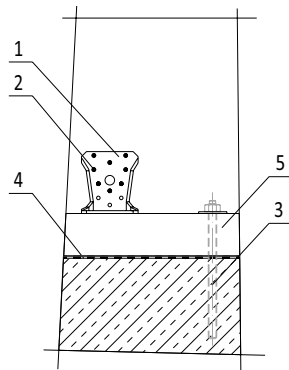
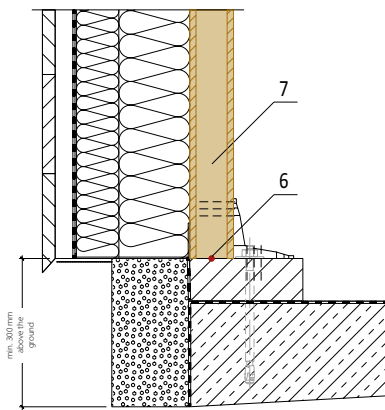
- LEGEND:**
1. **NOVATOP OPEN ROOF**
 2. **NOVATOP ROOF ELEMENT**
 3. **NOVATOP SOLID WALL**
 4. SCREW (NUMBER AND SPECIFICATIONS ACCORDING TO STATICS)
 5. AIRTIGHT EXECUTION OF THE JOINT

ND 319-320

Examples of structural details



- LEGEND:**
1. BMF KR ANCHOR
(NUMBER ACCORDING TO STATICS)
 2. ROUND HEAD NAIL 4 x 50
(NUMBER ACCORDING TO STATICS)
 3. MECHANICAL ANCHOR
 4. DAMP PROOF MEMBRANE
 5. BASE PRISM
 6. AIRTIGHT EXECUTION OF THE JOINT
 7. **NOVATOP SOLID WALL 124, 84, 62**



ND 121

- LEGENA:**
- | | |
|------------------------------|------------------------------------|
| 1. NOVATOP SOLID WALL | 5. CARPENTER'S SQUARE |
| 2. SWP PANEL | 6. PU FOAM |
| 3. WINDOW | 7. WINDOW TAPE |
| 4. THERMAL INSULATION | 8. APU BAR |
| | 9. AIRTIGHT EXECUTION OF THE JOINT |

ND 407

Notes

A large grid of small dots for taking notes, consisting of 20 columns and 30 rows.

Online support for you



Technical documentation

- > Technical documentations
- > Structural details
- > **EIM** TECH library

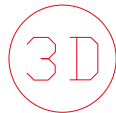


Online support

- > > Software
 - Raumecho App with integrated sound simulation
 - Software for dimensioning
- > Calculators
 - Structure price calculation
 - Calculation of the price of acoustic panels
- > Acoustic panel configurator
- > Assembly instructions
 - EASY BOARD
 - ACOUSTIC



Certificates, Declaration of properties, attests and reports

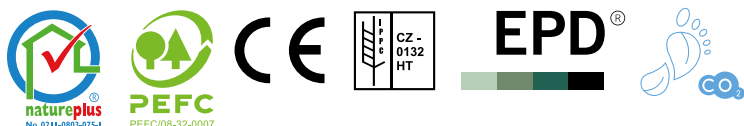


3D library

- > PBR / 8K



Manufacturer certificates:



Manufacturer: AGROP NOVA a.s.

Ptenský Dvorek 99 • 798 43 Ptení

Czech Republic • Tel.: +420 582 397 856

novatop@agrop.cz • www.novatop-system.com

