



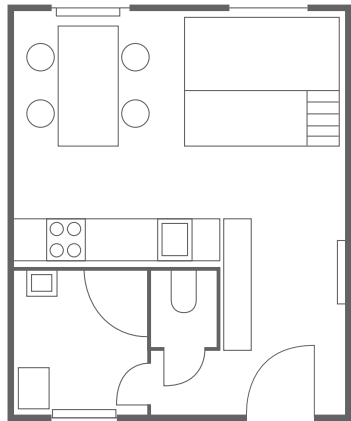
# Assembly instructions

## Prefabricated wooden house to be completed

Quick and easy self-help assembly



30m<sup>2</sup>



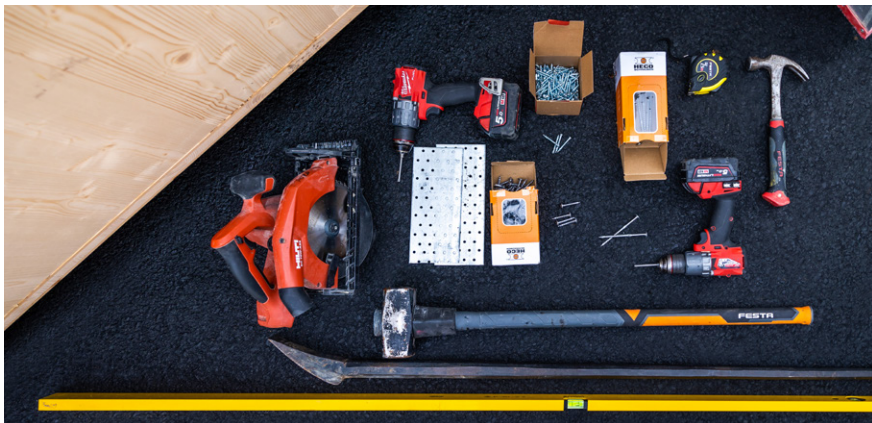
### Fast, high-quality and efficient

- ▶ Durable and high-quality housing made of wood
- ▶ Solid prefabricated wooden kit
- ▶ Quick and easy self-help assembly
- ▶ Easy disassembly and relocation or recycling
- ▶ Cut-outs from windows and doors for the use in the interior (table, shelf)

### The house contains

- ▶ Underlay prisms 4 pcs., under the ceiling 2 pcs
- ▶ Floor panels 3 pcs
- ▶ External wall panels 10 pcs + internal wall panels 5 pcs
- ▶ Ceiling panels 6 pcs

Window and door fillings and other technical equipment can be supplied individually upon request.



1

When assembling this structure, we need the following tools and accessories.

2

On a levelled wooden grid, we place the floor panels based on their



YouTube

NOVATOP

Prefabricated wooden house to be completed

# Assembly instructions



Time-tested NOVATOP building system



3

The connection floor panels is made by overlapping, and the attachment to the beams is made with 6 x 100 mm screws, while the individual parts are joined with 6 x 40 mm screws. The anchoring distance is approximately 40 cm.



4

Installation of wall panels. First, we create the corner and proceed according to the individual numbers. The corner joint is anchored with 6 x 100 mm screws, while the lengthwise overlapping is made with 6 x 40 mm screws.



5

We mark the positions of the inner walls according to the drawing and anchor them in the same way as the other walls.

Prefabricated wooden house to be completed

# Assembly instructions



6

We anchor the walls to the floor using perforated sheets or angle pieces.



7

Then we insert the ceiling beams into the prepared notches and anchor them to the walls.



Prefabricated wooden house to be completed

# Assembly instructions



8

The last thing to be done is the roof panels, which we will gradually align with the walls and anchor to each other. The connection principle is the same as for the floor.



9

Now, the basic structure is ready. Window and door fillings and other equipment can be supplied individually.



AGROP NOVA a.s., Czech Republic

+420 774 719 766

jan.susen@agrop.cz

www.novatop-system.com

