

Stable
craftsmanship without
compromises

NOVATOP SYSTEM

NOVATOP 

The wood you
see and feel



NOVATOP SYSTEM

NOVATOP is a comprehensive, and in many respects unique, building system of large format panels produced using cross laminated solid wood. It combines solid wood, innovation and craftsmanship. We manufacture the entire system in the Czech Republic and we collaborate with Czech and foreign experts on its development.

CZECH PRODUCTION SINCE 1992, SWISS KNOW-HOW

Our company continues the tradition of wood processing, which was already started by the Liechtenstein family in Plumlov in 1865. The production of 3-layer panels in Ptení was started in 1992, and we became a family company in 2001. Our premises cover an area of 11 hectares. Annually, we process timber with a volume of over 50,000 m³, our products cover an area of 1,300,000 m² and we export them to 26 countries.

REVERENCE AND RESPECT FOR NATURE

We don't talk about sustainability, we experience it. Our production is environmentally friendly, and protects the climate and, above all, human health. All NOVATOP products are manufactured in natural, renewable raw material under strict environmental regulations. The entire production meets strict criteria for a number of certifications. In 2008, we were the first manufacturer in the Czech Republic to obtain the prestigious Natureplus certificate.

Annually, we bind more than 22 million kg of CO₂ a year; it corresponds to approximately 147 million kilometres of a car journey.

EXCEPTIONAL CRAFTSMANSHIP

NOVATOP is unique due to the high proportion of manual labour, which cannot be replaced by any machine. But, at the same time, they are human hands that operate the most advanced and powerful technologies. We combine expertise, art and passion. Each product is carefully processed to meet the highest quality standards, and we perform final inspection on each one in person.



We start
in the
forest



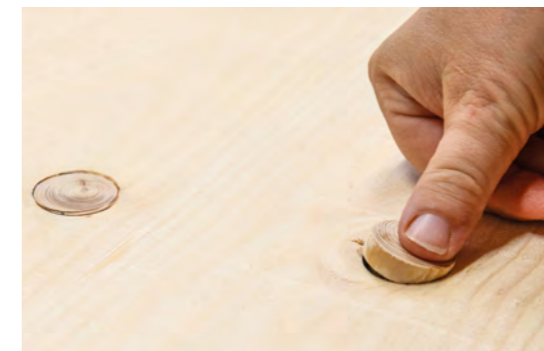
We change
wood
to NOVATOP



We combine
wood, craft
and design

CONSISTENTLY HIGH QUALITY WITHOUT COMPROMISE FOR 33 YEARS

- The basis of all products is formed by a 3-layer NOVATOP panel.
- For its production, we use only central timber, which we dry to 7–8 %.
- The production technology guarantees a closed surface – the panel is glued in all joints with an emphasis on the accuracy of the thickness of the individual layers.
- The absence of air gaps eliminates the possibility of water vapour penetrating into the panel structure, thereby ensuring the long-term stability of the panels and eliminating the appearance of surface cracks.
- We repair the panels exclusively with natural knots from branches of our own production.
- We machine all panels with high precision.
- **We perform output inspection of each panel personally.**



WHAT DOES THE NOVATOP SYSTEM OFFER TO YOU?

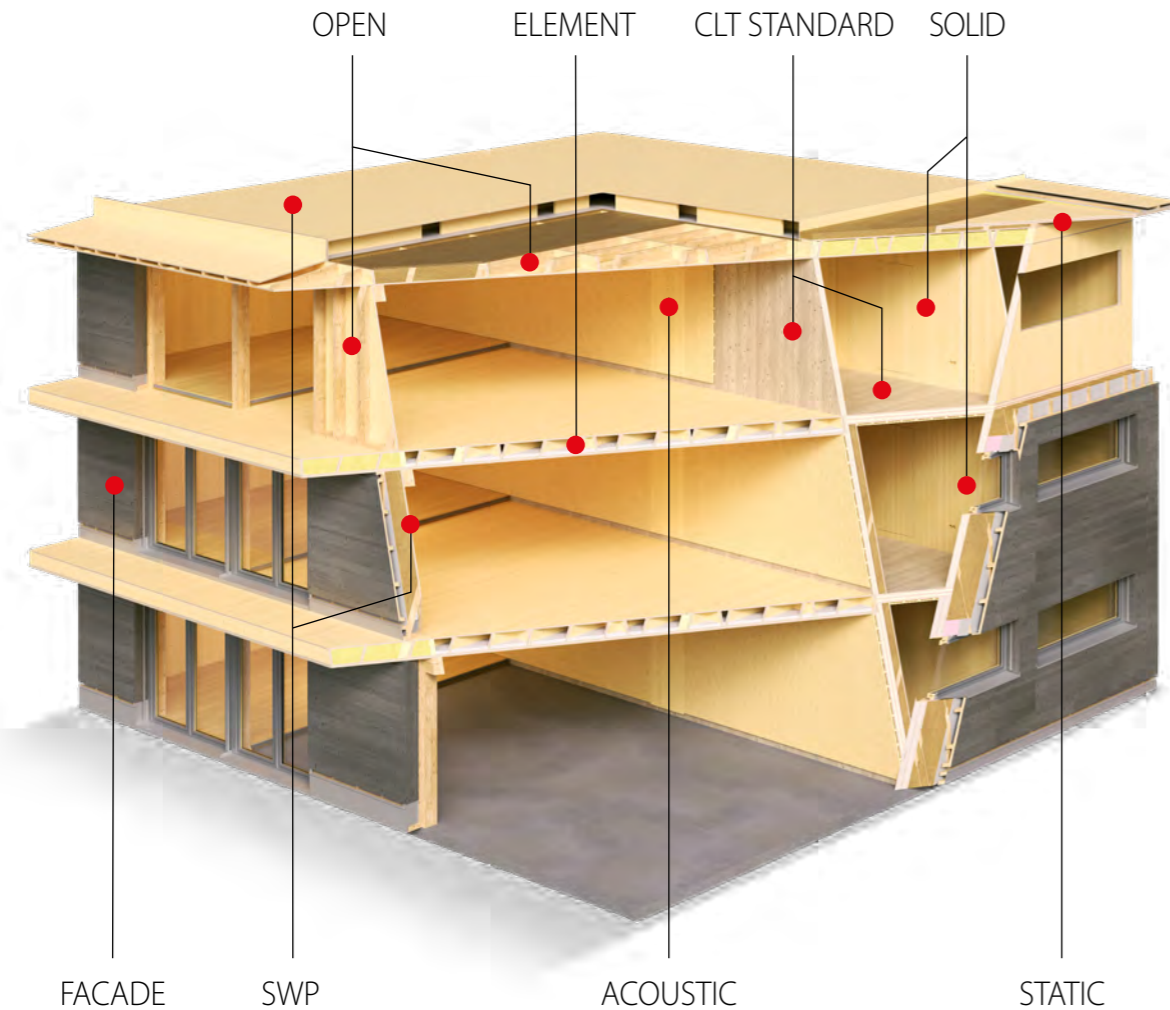
INDIVIDUAL APPROACH AND FLEXIBILITY

We like challenges! We can flexibly adapt your wishes to our production possibilities. We work with CNC machines that guarantee accurate and precise results. We focus on detail, comprehensive service and your individual customer requirements. We will consult with you on the feasibility of the design and its possible optimization with regard to fire safety solutions, statics and acoustics.

A PROVEN COMPREHENSIVE SOLUTION FROM ONE MANUFACTURER

NOVATOP SYSTEM is suitable for wall, ceiling and roof structures with vertical and horizontal placement. It is suitable for the construction of houses and apartment buildings, office buildings, schools, sports facilities and large industrial buildings. However, it can also be used in extensions, superstructures and reconstructions. The individual elements of the system can be combined with other structures of wood as well as a brick building, steel or glass. NOVATOP surface materials in the form of multi-layer panels, acoustic and facade panels offer a very wide range of applications both indoors and outdoors.

All products are characterized by high quality, strength and stability, united by a uniform surface texture.



SOLID

Wall panels based on cross-laminated wood with a unique visual quality resistant to drying cracks and joint formation.

STATIC

Five-layer solid wood panels that are used primarily for structures with increased static requirements.

CLT STANDARD

Structural non-visual CLT (in the range from 06/2024).

SWP

A varied assortment of three-layer panels with a very wide range of applications both in the interior and exterior.

ELEMENT

Hollow rib elements based on multilayer solid panels that can be supplemented with insulation and installations.

ACOUSTIC

Acoustic panels made of a solid three-layer board are perforated into various profiles with a verified high degree of sound absorption.

OPEN

Panels with a selectable degree of prefabrication that combine the advantages of KVH timber beams and multilayer panels.

FACADE

Three-layer panels with metallic glazing paints for cladding facades.

ADVANTAGES



VISUAL QUALITY WOOD IN THE INTERIOR

NOVATOP bearing structure can also make the internal surface. The high quality of visual wood in the interior is guaranteed by the unique production technology. All products have a uniform surface texture. The surfaces of the panels can be treated in the same way as natural wood.

SPEED OF CONSTRUCTION

A NOVATOP building is assembled as a construction kit—precisely, quickly, and easily. All panels are custom made and shipped directly to the construction site. There, they are assembled to make the massive structures of the building using a crane.

AIRTIGHTNESS

All NOVATOP panels are airtight and make an airtight envelope, even without foil moisture stops. In order to achieve airtightness, the design as well as the rigorous implementation of all the details (the number of which is much smaller than with other building systems) on the site are crucial.

DIFFUSIONAL OPENNESS

A NOVATOP structure remains diffusionally open with suitably chosen insulation. There is no need for a foil moisture stop, so one of the most problematic areas in the assembly of wooden buildings is eliminated. The panels consist of solid wood in the whole cross-section and effectively reduce the penetration of moisture. Quality structure guarantees a mould-free indoor environment!

ACOUSTICS

Physical acoustics: NOVATOP achieves an increase in sound attenuation and a reduction in the level of impact noise by correctly designing the structural compositions and details, which is conditioned by consistent execution on the construction site. Impact sound is effectively reduced by limestone grit, which may be used for filling ceiling elements. The requirements for architectural acoustics can be met by cladding the interior with acoustic panels NOVATOP ACOUSTIC.

PHASE SHIFT

Phase shift of the panels is, according to thickness, in the range of 3 to 7 hours; in combination with wood fibreboard insulation it is up to about 15 hours.

FIRE RESISTANCE

Based on fire tests, NOVATOP can be also used for construction of buildings with increased requirements for fire resistance. Individual segments of the construction can be optimized to the required dimensions.

HOW DO BUILDINGS MADE OF NOVATOP COME INTO EXISTENCE?

ARCHITECT'S DESIGN

The design of the building combines the architect's imagination with the investor's requirements and, at the same time, it takes into account the structural and aesthetic possibilities of NOVATOP.

PROJECT

The designer transfers the design of the building to the project documentation, which takes into account all requirements. The requirements for thermal and sound insulation, fire resistance and visual quality are specified in cooperation with the client, and, if necessary, verification of the statics of the entire building are recommended.

PRODUCTION

We will digitally transfer the 3D model of the bearing structure to CNC machines. The individual parts are machined with millimetre accuracy. The panels are fitted with all functional cut-outs (windows, doors). Routes for distribution and installations can be milled inside the panels during the production stage.

STRUCTURE ASSEMBLY

The wooden construction kit is taken from the factory to the construction site, where the bearing structure is assembled using a crane. The installation should be put in the hands of trained builders.

COMPLETION OF THE BUILDING

Fillings of openings, insulation and the facade are then applied to the structure according to the requirements of the project. In the interior, the panels can be left without cladding as the final surface. ACOUSTIC panels can be used in the interior to improve room acoustics. For cladding facades, it is possible to use FACADE panels. For interior fittings, some of the other NOVATOP surface materials (SWP, EASY BOARD, ALTHOLZ, DOOR, etc.) can be used.



Preparation for electrical wiring inside the panels across the entire height of the walls



NOVATOP SOLID for walls and partitions



DESCRIPTION

NOVATOP SOLID are large format solid panels made of cross laminated solid wood (CLT - cross laminated timber). The panels are manufactured from dried spruce lamellas put together in layers; the layers cross at an angle of 90°. The number of layers can differ and this determines the final thickness of the panel. The longitudinal joints of the lamellas are glued together; the adhesive used is waterproof. The quality of sanding corresponds to the grain size of 100.

Application: Panels solid can be used especially for structures of bearing and non-bearing walls, or ceilings, and also offer visual quality of solid wood in the interior.

ASSORTMENT

Basic recommended format: 2,500 x 6,000 (max. 2,950 x 12,000)
More information in the technical documentation.

Thicknesses for walls (mm): 62, 84 (42/42), 124 (62/62)
Thicknesses for ceilings (mm): 81 (27/27/27), 84 (42/42), 116 (27/62/27)

Surface quality: non-visual construction, visual living space

INNOVATIONS (on demand)

SOLID with veneer Surface finishes (oak, beech, walnut, cherry, ash)
Surface finishes 2 in 1 – protective coating and final surface finish in the interior

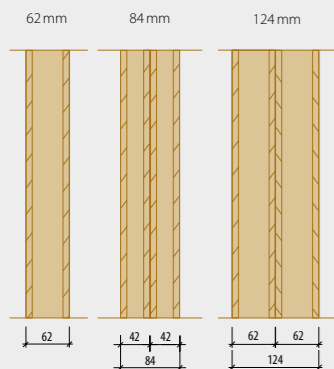
NOVATOP EXCLUSIVE ADVANTAGES

- **Unique visual quality in the interior**
 - exceptional stability and resistance to drying cracks and joint opening
 - uniform texture with other NOVATOP products
 - continuous visual lamella up to 10 m, e.g. for staircase and gable walls
- **Electrical channels conduit across the entire height of the walls while maintaining the airtightness of the panel**
 - a possibility of oblique and zigzag conduit
 - a possibility of preparing larger channels
 - a possibility of preparing pockets, holes or sockets even from the back for half the thickness of the panel
- Unrivalled accuracy of joints
- Complete airtightness
- Possibility of variable fibre orientation (horizontal, vertical)
- **Possibility of veneering the visual side**

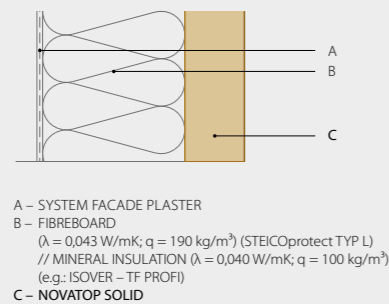
Standard benefits

- Large area panels of up to 12 x 2.98 m
- Dimensionally stable and firm
- Load-bearing across the entire surface
- Exact machining according to the project
- Quick and easy assembly with high accuracy
- Diffusional openness
- Fire resistance
- Ecological material, CO₂ negative

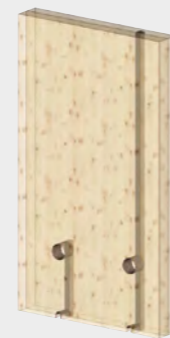
THICKNESS



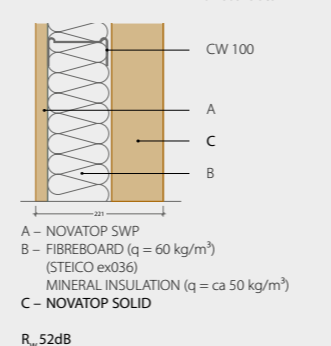
EXAMPLE OF AN EXTERNAL WALL (W100)



WIRING (ND126)

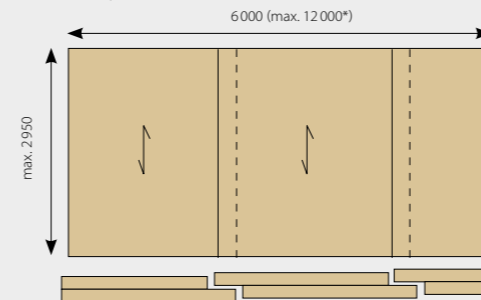


EXAMPLE OF AN INTERNAL WALL (W111)

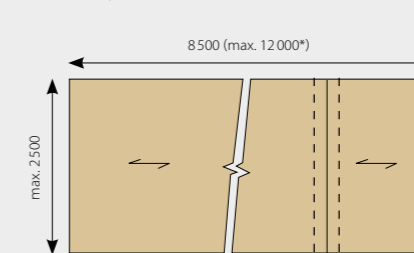


FORMATS - PRINCIPLES OF PUTTING PANELS TOGETHER

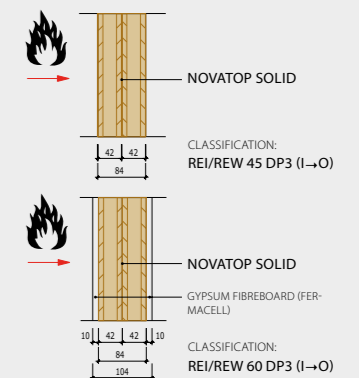
* **Recommendation:** due to traffic restrictions and improved handling, we recommend maximum length of 8,500 mm.
Vertical fibre direction.
Connection of panels: with a fastener or longitudinally with overlaps 100–1,250 mm
Delivery: in piece or in parts



Horizontal fibre direction.
Connection of panels: with a fastener
Delivery: in piece or in parts



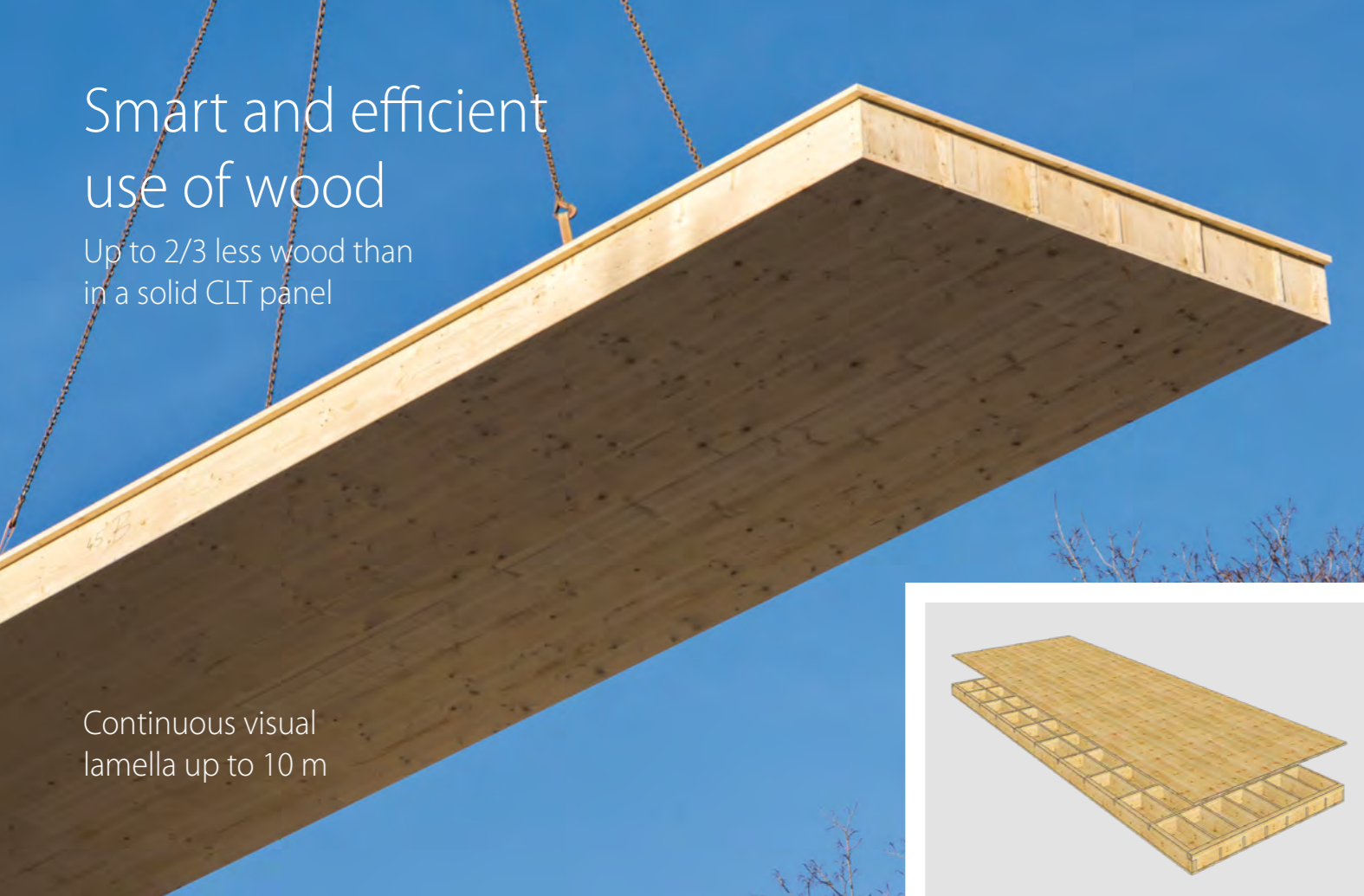
FIRE RESISTANCE



Smart and efficient use of wood

Up to 2/3 less wood than in a solid CLT panel

Continuous visual lamella up to 10 m



NOVATOP ELEMENT for ceilings and roofs



DESCRIPTION

NOVATOP ELEMENT consists of a bearing bottom multilayer panel (SWP – Solid wood panel) whose thickness depends on the required fire resistance of the structure. Transverse and longitudinal ribs (SWP), whose height is dependent on the required load of the element, are glued onto it. The whole structure is topped with an upper multi-layer board. Connection of the boards and the ribs is carried out by gluing and cold pressing. The cavities between the ribs can be fitted with insulation or distribution routes for installations during the production process. The elements can be supplied with a bottom board of visual quality.

Application: Especially bearing ceilings and roofs.

ASSORTMENT

Widths (mm): 1,030, 2,090, 2,450, max. 2,450

Lengths (mm): according to the project documentation, standardly 6,000, max. 12,000

Heights (mm): 160, 180, 200, 220, 240, 280, 300, 320, max. 400

Quality of the element's bottom panel: non-visual construction, visual living space

INNOVATIONS (on demand)

Surface finishes 2 in 1 – protective coating and final surface finish in the interior

NOVATOP EXCLUSIVE ADVANTAGES

- **Unique visual quality in the interior**
 - exceptional stability and resistance to drying cracks and joint opening
 - uniform texture with other NOVATOP products
 - continuous visual lamella up to 10 m
- **High degree of prefabrication**
 - production flexibility responding to the individual requirements of the project
 - the possibility of using various types of SWP, DUO, BSH, LVL ribs
- **Efficient use of wood – up to 2/3 less wood than in a solid CLT panel!**
- **Cavity fillings with insulation**
 - across the entire surface as well as locally – by combining the layers, an effective thickness is created
 - limestone grit for attenuation of impact sound as well as airborne sound insulation
 - thermal insulation (fibreboard, mineral, individual requirements)
 - routes for distributions
 - non-flammable electrical installation boxes
- **Properties**
 - spatial rigidity
 - low weight, high static load capacity
 - highly effective solution for spans of 6–8 m
 - airtightness of the structure
- **Formats up to 2.45 x 12 m**
 - **length with a continuous surface lamella of up to 10 m!**
 - with a lamella connected using a dovetail joint up to 12 m
- **Assembly**
 - easy and precise joining – quick assembly with high accuracy
 - safety and comfort on the construction site – immediate load-bearing capacity and foot traffic – immediate load-bearing capacity and foot traffic
- **Compatibility with different types of structures**
 - with brick or reinforced concrete construction
 - with steel elements
 - the possibility of milling the side of the panels into an I-shape, HEB...
 - with purlins, beams, prisms and other wooden structures

TYPES OF FILLINGS

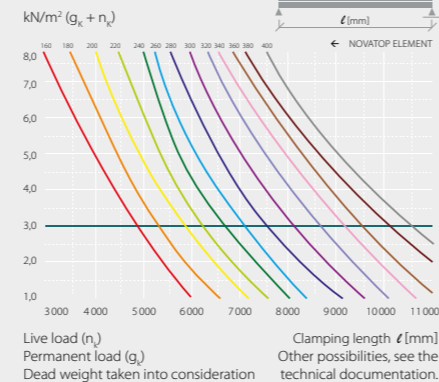


PREPARATION OF DISTRIBUTION



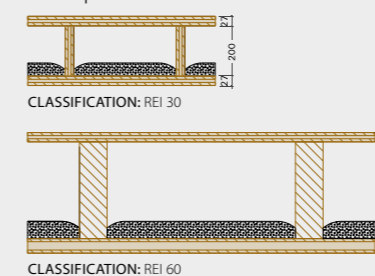
PRELIMINARY DIMENSIONING

WITHOUT FILL $\ell/300$

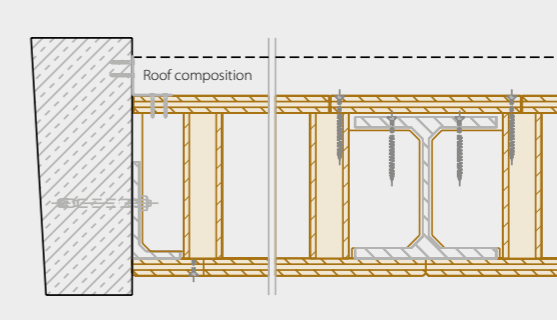


FIRE RESISTANCE

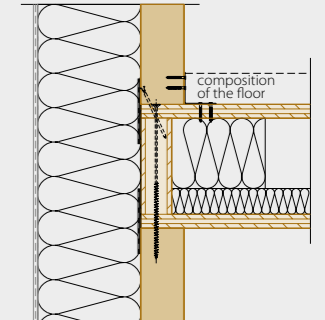
Examples



EXAMPLE OF A CEILING (ND 207)



WALL WITH THE CEILING (ND 201)



Flexible degree of prefabrication



NOVATOP OPEN



DESCRIPTION

NOVATOP OPEN consists of a bearing bottom multilayer panel of solid wood (SWP – Solid wood panel), onto which beams (KVH, DUO, TRIO, BSH, I-girder) fulfilling the support function are glued. For reinforcement around the perimeter and around the openings, there are inserted transverse reinforcing ribs. The dimensions and the distances of the beams can be adjusted according to the requirements of the project. Connection of the panels and the ribs is carried out by gluing and cold pressing. The space between the beams can be fitted with thermal insulation. OPEN element can be closed with another, diffusionally open, material (e.g. Fermacell, DHF, DFP, etc.).

Application: For roofs, ceilings and walls

ASSORTMENT

SWP thicknesses (mm): 27 (9/9/9), 19 (6/7/6)

Total heights (mm): 227, 247, 267 and other

Standard widths (mm): 1030, 2090, 2450

Lengths (mm): according to the project documentation, standardly 6000, maximum 12.000 mm

KVH dimensions (DUO, TRIO, BSH, I-girders): 200/60; 220/60; 240/60 and other

Maximum format (mm): 2,450 x 12,000

(Extension of the SWP with an inlay finger joint)

Qualities of the bottom panel of the element: non-visual construction, visual living space

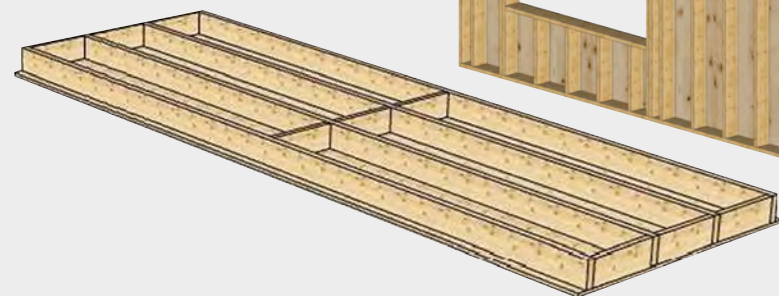
INNOVATIONS (on demand)

Surface finishes 2 in 1 – protective coating and final surface finish in the interior

NOVATOP EXCLUSIVE ADVANTAGES

- **Unique visual quality in the interior**
 - exceptional stability and resistance to drying cracks and joint opening
 - uniform texture with other NOVATOP products
 - continuous visual lamella up to 10 m
- **High degree of prefabrication**
 - cutting the ribs, the possibility of adding diffusion foils, closing with fibreboards, assembly of SWP panels on the overlapping part, etc.
 - the possibility of using various types of girders (DUO, BSH, Steico, LVL etc.)
- **Efficient use of wood – up to 3/4 less wood than in a solid CLT panel!**
- **Properties**
 - spatial rigidity – longitudinal stiffening of the roof using the SWP panel
 - low weight, high static load capacity
 - airtightness of the structure
 - high production flexibility responding to the individual requirements of the project
 - for diffusionally open structures, double-shell sloping roofs
- **Cavity fillings with insulation**
 - across the entire surface as well as locally – by combining the layers, an effective thickness is created
 - thermal insulation (fibreboard, mineral, individual requirements)
 - routes for distributions
 - non-flammable electrical installation boxes
- **Formats up to 2.45 x 12 m**
 - **length with a continuous surface lamella of up to 10 m!**
 - with a lamella connected using a dovetail joint up to 12 m
- **Assembly**
 - easy and precise joining
 - quick assembly with high accuracy
 - safety and comfort on the construction site – immediate load-bearing capacity
- **Compatibility with different types of structures**
 - with brick or reinforced concrete construction
 - with steel elements – the possibility of milling the side of the panels into an I-shape, HEB...
 - with purlins, beams, prisms and other wooden structures

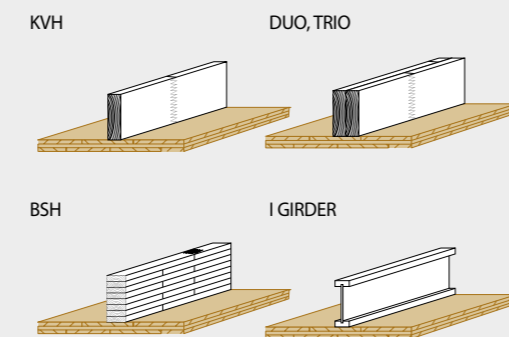
EXAMPLE FOR CEILINGS AND ROOFS



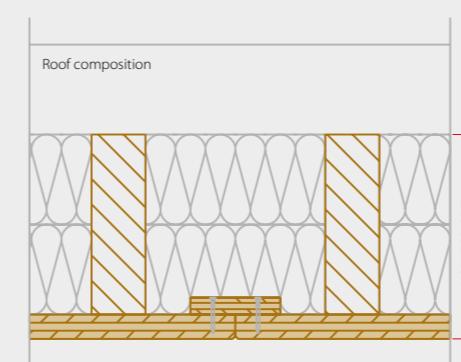
EXAMPLE FOR WALLS



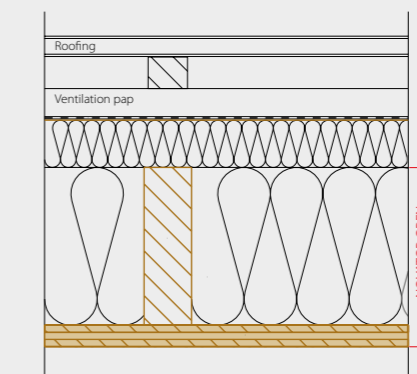
TYPES OF BEAMS



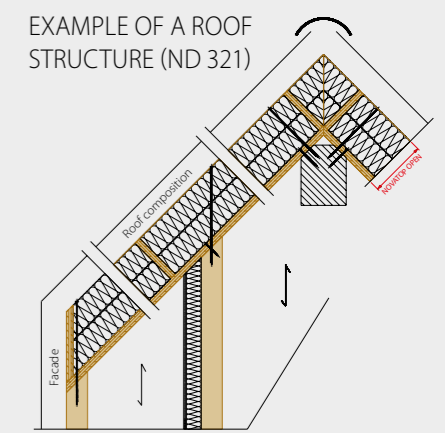
LONGITUDINAL JOINT (ND 327)



EXAMPLE OF A ROOF STRUCTURE (R 300)

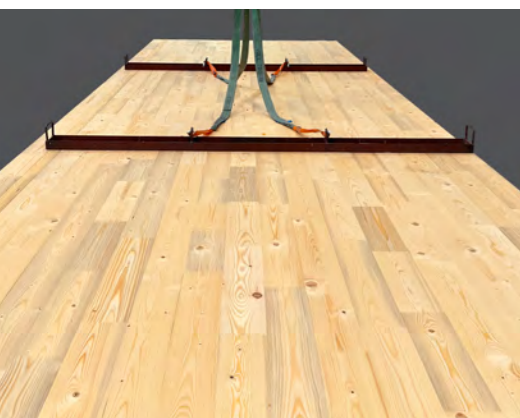


EXAMPLE OF A ROOF STRUCTURE (ND 321)



Structural non-visual CLT

NEW
in the range
from
06/2024



CLT STANDARD



DESCRIPTION

CLT STANDARD are structural large-format panels made of cross-laminated timber (CLT – cross laminated timber). The panels are manufactured from spruce lamellas dried to 12–14 % and put together in layers; the layers form an angle of 90°. The number of layers is odd (3, 5, 7) and determines the final thickness of the panel. PU glue, non-visual quality.

ASSORTMENT

Wood: Spruce

Panel compositions:

3-layer CLT: 60, 80, 84, 90, 100, 110, 120 mm

5-layer CLT: 100, 120, 124, 140, 160, 180, 200 mm

7-layer CLT: 180, 200 mm

Combination of lamellas of 20, 30 and 40 mm. For easy replacement with SOLID elements, we also offer CLT a thickness of 84 and 124 mm with individual lamellas.

Basic recommended format (mm): 3,500 x 10,000, 2,500 x 12,000 Fibre direction: Longitudinal (L) as well as transverse (Q)

SURFACE QUALITY

Standard: non-visual.

On demand: CLT STANDARD panels can be glued with a 3-layer panel having a thickness of 19 mm to achieve visual quality and increase fire resistance.

PROPERTIES

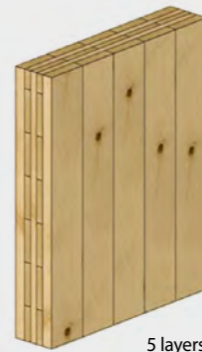
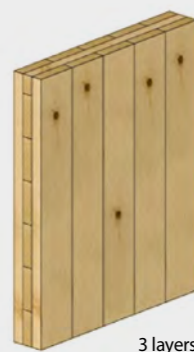
- Lamella strength of C24
- Lamellas connected by an open finger joint
- Wood moisture of 12 % ± 2 %
- Dimensional tolerance of +/-2mm

ADVANTAGES

- High load capacity
- High fire resistance
- Price efficiency
- Large formats
- Simple combination with other NOVATOP SYSTEM products



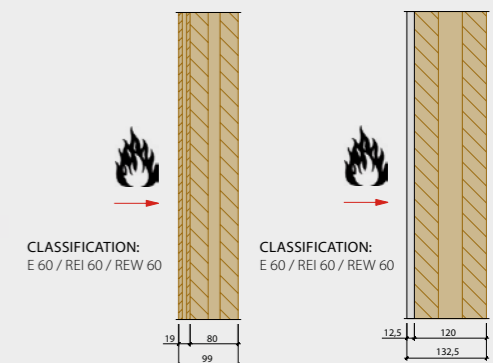
STRUCTURAL TYPE OF PANELS



VISUAL TYPE OF PANELS



FIRE RESISTANCE



A structure with increased static requirements



NOVATOP STATIC for roof overhangs

DESCRIPTION

NOVATOP STATIC are five-layer panels (SWP – Solid wood panel). Each layer of the panel consists of lamellas of solid wood. The panel has one middle layer rotated by 90° relative to the two parallel surface layers on each side. The thickness of the layers can differ and determines the final thickness of the panel. The longitudinal joints of the lamellas are glued together; the adhesive used is waterproof. The quality of sanding corresponds to the grain size of 100.

Application: Structures of overhanging edges of roofs, cladding with increased static demands, bearing and non-bearing walls and partitions, doors, gates, shelves, containers, etc.

ASSORTMENT

Thicknesses (mm): 45, 60 mm

Qualities: non-visual construction, visual living space

NOVATOP STATIC L

Longitudinal direction of the fibres of the surface lamellas

Standard lengths (mm): 2,500, 5,000, 6,000

Maximum length (mm): up to 12,000
(with the inlay finger joint)

Widths (mm): 1,040, 1,250, 2,100, 2,500

NOVATOP STATIC Q

Transverse direction of the fibres of the surface lamellas

Standard lengths (mm): 4,950 (with an inlay finger joint)

Widths (mm): 2,500

NOVATOP EXCLUSIVE ADVANTAGES

- **Unique visual quality in the interior**
 - exceptional stability and resistance to drying cracks and joint opening
 - uniform texture with other NOVATOP products
- **Creation of subtle overlaps and reinforcement of structures** with minimization of thermal bridges
- **Production flexibility** responding to the individual requirements of the project

Standard benefits

- High static characteristics
- Modulus of elasticity of up to 11,500 N/mm²
- High bending strength in the main axis of up to 48N/mm²
- Formats up to 2.45 x 12 m

MACHINING

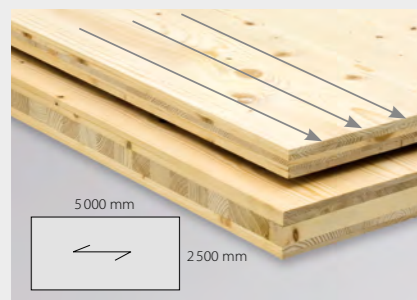
grooves from the side • inlay finger joint • milling of various shapes, etc.

Surface treatments on demand.



Example of machining – finger joint

NOVATOP STATIC L



NOVATOP STATIC Q



THICKNESS

45 (9-9-9-9-9)



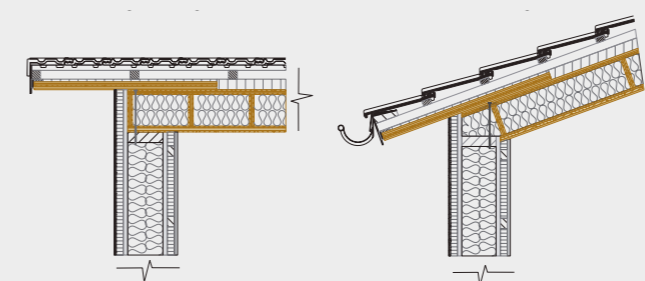
60 (9-9-24-9-9)



EXAMPLES OF APPLICATION

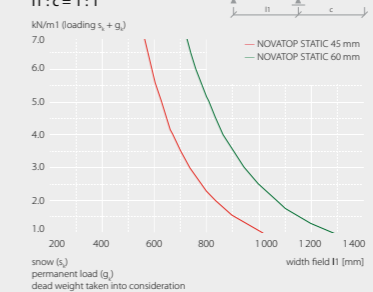
Offset on the side of the gable

Offset on the side of the eaves

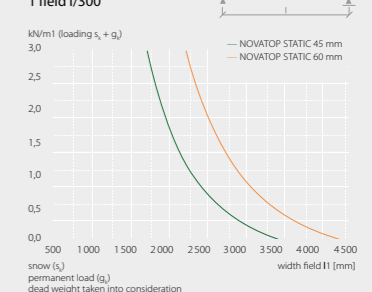


EXAMPLES PRELIMINARY DIMENSIONING

Preliminary dimensioning l/450
l1 : c = 1 : 1



Preliminary dimensioning 1 field l/300



Acoustic comfort and unique design



Studio Perspektiv CZ



Wood, surface

Profile

Accouplement

Absorber

Solid wood

NOVATOP ACOUSTIC



DESCRIPTION

Acoustic panels NOVATOP ACOUSTIC are made of a solid three-layer panel (SWP) perforated into various profiles. The shape of the profile and the proportion of the perforated surface varies by type. In the production process, the panels are complemented with absorbers according to the acoustic requirements of the project. The prefabricated panel is ready for direct assembly.

Application: NOVATOP ACOUSTIC panels optimize acoustic properties of the space. A suitably selected combination of wood, profile, absorber and surface treatment offers a wide range of options in the process of formation of a modern interior design.

NOVATOP EXCLUSIVE ADVANTAGES

- **Unique visual quality in the interior**
 - exceptional stability and resistance to drying cracks and joint opening
 - uniform texture with other NOVATOP products
- **Natural solid wood in a thickness of 19 mm**
- Timeless design
- Production flexibility – the possibility of machining according to the project

Standard benefits

- Proven absorption of spatial sound
- Certificates, tests
- Coloured accouplements
- Multiple combinations of absorbers

PROFILES

Marilyne (8/25, 4/12, S1, S2, S3) • Sonata (4/10, S1)
 Lucy (Ø 8 mm - 16/16, Ø 10 mm - 32/32, Ø 16 mm - 32/32) • Domino • Suzanna • Giulia
 Tina • Beata (dispersing element)

Basic recommended format (mm): 625 x 2500
 (Comprehensive overview according to the profiles in the technical documentation)

WOOD

Spruce • Silver fir • Altholz (vintage wood)
 Edge-glued panel – Oak

VENEERS

Standard: tangential oak • radial oak
Made to order: • rustic oak • beech • walnut
 cherry • ash tree

SURFACE FINISH

On demand, we offer various glaze options (water-based, UV stable) depending on the type of supplier. As a standard, we offer three basic shades – natural, with a smaller or greater proportion of white pigment. For more information, see the technical documentation.

ACCOUPLEMENTS

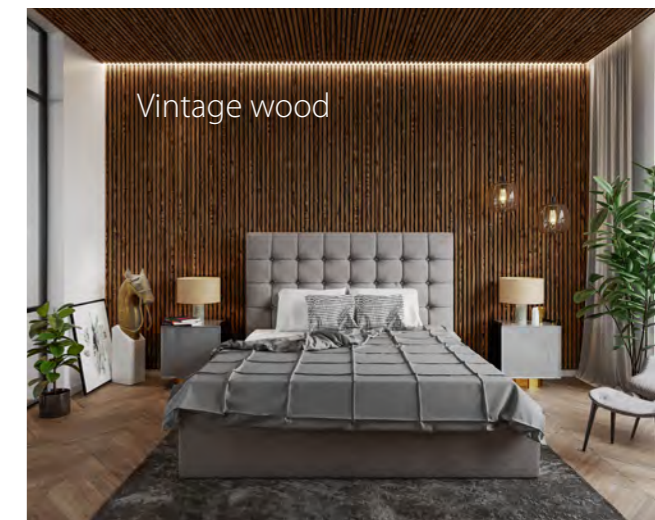
SWP – 3-layer spruce board
 MDF black, brown

ABSORBERS

Steico Therm SD • Steico Flex + Fibertex
 Ursa AKP 2/v • Fibertex



Oak veneer



Vintage wood



High aesthetic value
and functionality

Max 10 m
with a continuous
visual lamella



Arch. Pascal Flammer CH



Madeja sport CZ

NOVATOP SWP 3-layer panels



DESCRIPTION

NOVATOP SWP are multilayer boards consisting of an odd number of layers, most often three and five. Each layer consists of lamellas of massive solid wood. The layers are rotated 90° relative to each other. The thickness of the lamellas is different and determines the final thickness of the panel. For production, coniferous wood is dried to 8-12 %. The surface layers are repaired, essentially with natural knots and putty. The surfaces are ground with a grit of 100. The boards show ten times lower formaldehyde emissions than the limits for Class E1 and, in 2008, they were the first in the Czech Republic to receive the Natureplus certificate.

Use in the construction industry - flat construction material

- Wooden buildings, brick buildings, reconstruction
- Reinforcing boards horizontal and vertical structures,
- Load-bearing roof and ceiling decking, roof soffit decking,
- Subtle offset structures without rafters and beams (for lean and saddle roofs)
- Facades and facade elements
- Bearing and non-bearing walls, partitions
- Cladding of walls, ceilings, floors

Use in joinery

- Cross-glued composition minimizes twisting and bending in larger areas, even with changes in temperature and humidity
- Production of furniture, interior accessories
- Easy machining (milling, cutting, drilling)
- Stairs, or risers
- Interior doors

ADVANTAGES

Unique visual quality in the interior

- Exceptional stability and resistance to drying cracks and joint opening
- Uniform texture with other NOVATOP products

The character of natural solid wood • natural non-toxic material • dimensional stability, high bending strength • excellent workability of surfaces and edges • large format • easy manipulation and assembly

ASSORTMENT

Wood: Central European spruce

Standard thicknesses (mm): 13 (4-5-4), 16 (5-6-5), 19 (6-7-6), 21 (6-9-6), 27 (6-15-6), 27 (9-9-9), 33 (9-15-9), 42 (9-24-9), 50 (9-32-9), 60 (9-42-9)

Basic recommended format (mm): 2100 x 5000, 2500 x 6000 (Max 2500 x 10 000 in th. 27 mm)

MACHINING

Spring and groove + chamfered edge, grooves from the side, inlay finger joint

SURFACE FINISH

On demand, we offer various glaze options (water-based, UV stable) depending on the type of supplier. As a standard, we offer three basic shades – natural, with a smaller or greater proportion of white pigment. For more information, see the technical documentation.



Lucia Kocmanová Dřevostavby MC CZ



CH



EASY BOARD

It's really easy with EASY

DESCRIPTION

EASY BOARD is a new special series of 3-layer panels with a tongue, a groove and a chamfered edge, which are characterized by an attractive final surface, imitating the modern look of visual CLT panels.

ASSORTMENT

3-layer panel

Machining: tongue, groove, chamfered edge / 4 side

Wood: Spruce, fir

Standard thickness (mm): 19 (6-7-6), 27 (6-15-6), 27 (9-9-9)

Standard format (mm):

Brutto: 625 x 2500, 625 x 3000, 1250 x 5000

Netto: 615 x 2490, 615 x 2990, 1240 x 4990

Packaging: 48 or 32 pcs.

ASSORTMENT

- The base plate
- Brushing
- Drilling: Profile 8/16-16, 10/32-32, 16/32-32
S/L – combined profile:(ø indicates the drilling diameter, the data after the slash indicates the distance between the holes).

Surface treatments on demand.

ADVANTAGES

- Precise joints
- Unique visual quality
- A wide range of products
- Dimensional stability and high strength
- Easy handling and assembly



ALHOLZ

3-layer panels with original vintage wood

Vintage wood entails not only a rich history, but also an unmistakable appearance that emphasizes its authenticity and originality. Each piece has its own unique features, colours and textures that make it a unique work of art.

ASSORTMENT

Types of surfaces: 1A, 4A, 4B, 4C

Wood: spruce

Thickness (mm): 19

Widths (mm): 1,250

Lengths (mm): 2,600, 2,800, 3,000, 3,200



DOOR

A multi-layer panel with a double-sided covering layer made of vintage wood

ASSORTMENT

Wood: spruce, fir, veneer (oak, walnut, ash),

ALHOLZ – vintage wood (1A, 4A, 4B, 4C)

Thickness (mm): 42 (SWP 19 / plywood 4/ SWP 19)

Standard formats(mm)

Vertical direction of fibres

2100 x 2000, 2500

2500 x 2000, 2500

ALHOLZ: 1250 x 2500

Horizontal direction of fibres

2500 x 2000, 3000 x 2500

Other formats on request



Luxury
design

NEW
2024



Horizontal placement – tongue and groove



Vertical placement – butted joint

NOVATOP FACADE

3-layer panel with a tongue and a groove

DESCRIPTION

A 3-layer panel with a spring and a groove. The wood is dried to 8%, the lamellas are carefully selected, the surface is closed and repaired. This ensures the long-term stability of the panels in the exterior. The surface of the panels changes naturally, over time it can turn grey, be subject to erosion and create small cracks. The lifespan of the facade is mainly influenced by the type of exposure, connections, anchoring and other factors. To maintain a long service life, it is important to follow the principles of structural protection and regular maintenance.

RANGE OF PRODUCTS

Thickness: 27mm (9-9-9)
Machining: tongue & groove (4 sides)
Wood: Nordic spruce
Quality: AB/C
Use: exterior only

STANDARD FORMATS

Horizontal (net)
Widths (mm): 604, 1,229
Length (mm): 2,500, 5,000
Vertical (net)
Widths (mm): 617, 1,242
Length (mm): 2,000, 2,500, 3,000, 5,000

INDIVIDUAL FORMATS

On demand, based on the individual projects.

SURFACE FINISH

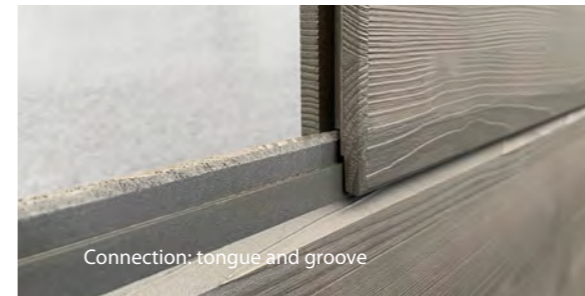
Brushing without surface treatment
Brushing with glaze – colourful metallic glittering effects

Glazing type: Adler Lignovit Platin
– water soluble, UV stable

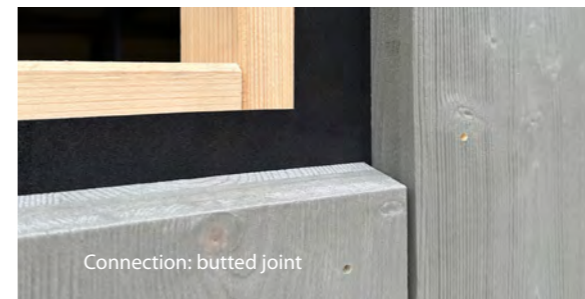
The Adler Lignovit Platin glaze enables formation of attractive colour effects on wooden facades. Special aluminium pigments add metallic gleams to the selected shade and effectively reflect UV radiation, thereby extending the life of the treated surfaces. It provides excellent weather resistance, vapour permeability and high UV stability.

Colour tone:

Quartzgrau 53294
Achatgrau 53292
Topasgrau 53317
Pyritgrau 53316



Connection: tongue and groove



Connection: butted joint

Metallic glittering effects

Quartzgrau 53294

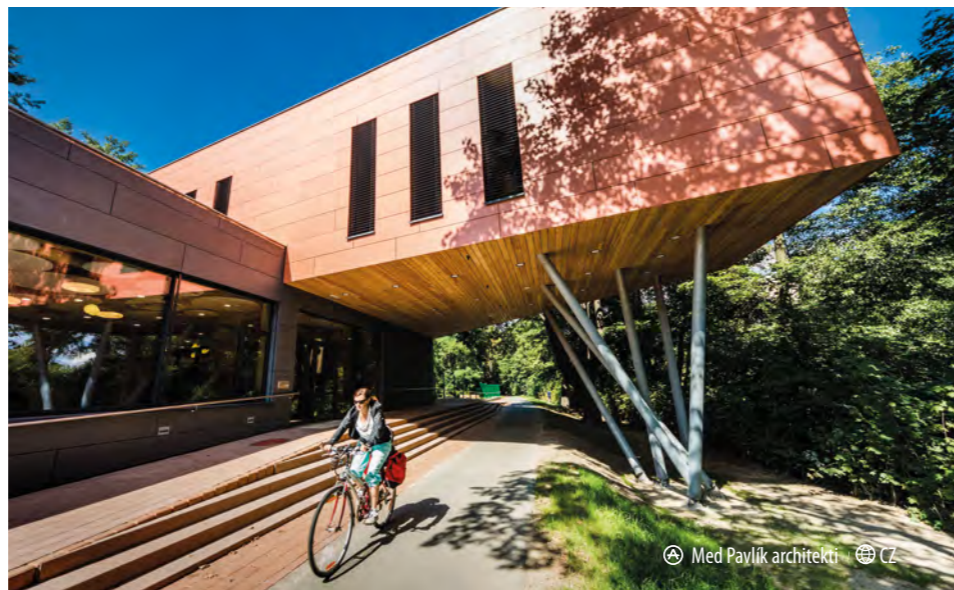
Achatgrau 53292

Pyritgrau 53316

Topasgrau 53317

Brushing without surface treatment

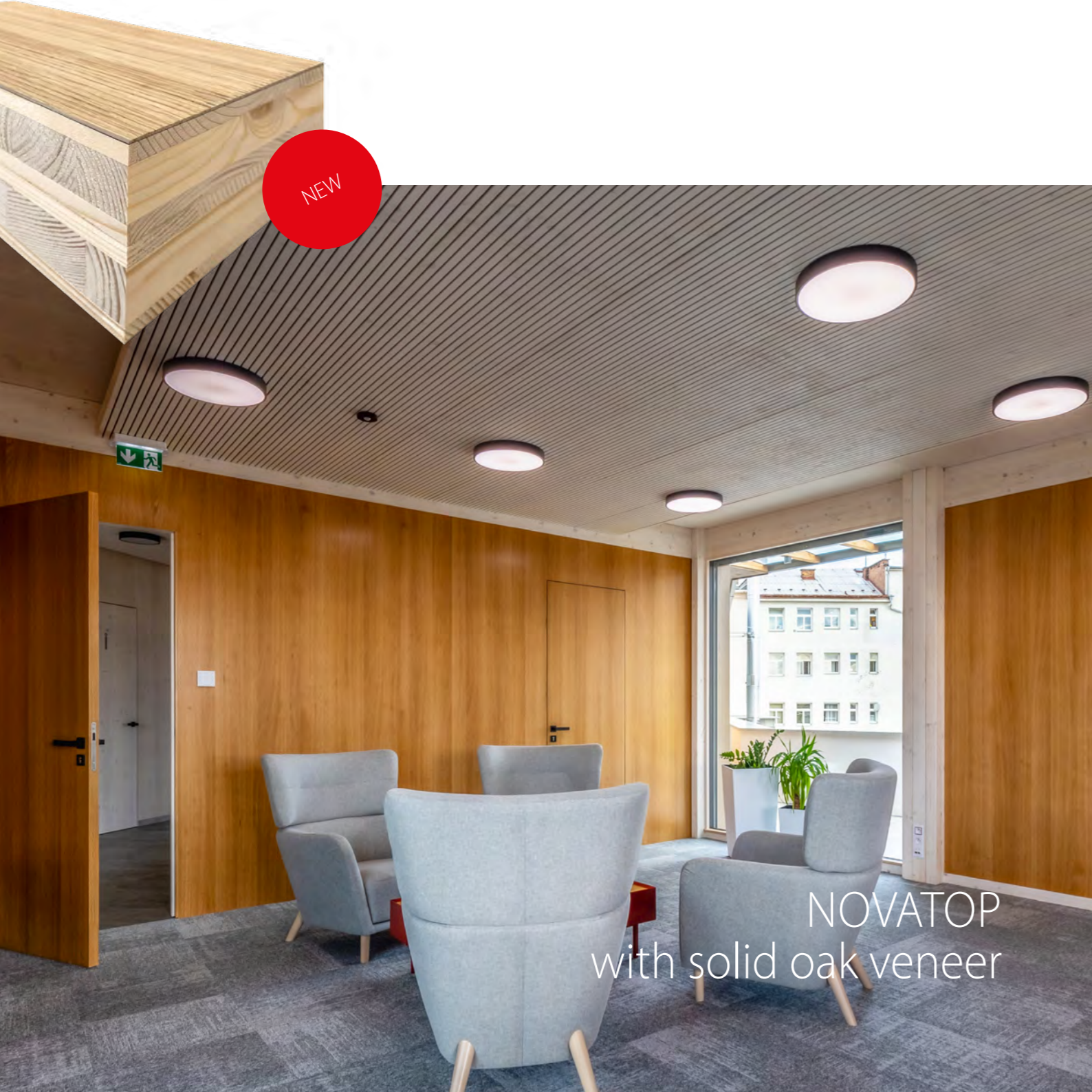
NOVATOP
– A COMPREHENSIVE
SOLUTION FOR YOUR
PROJECT







NEW



NOVATOP
with solid oak veneer



WMA architekti CZ



Straet Architects Auböck CZ



ATELIER SAEM CZ



Prodesi Domesi CZ



Müller verdan architekten CH



ON-LINE
Tools

CONFIGURATOR

RAUMECHO-APP

SW DIMENSIONING

BIM LIBRARY

3D LIBRARY





© YKH Architects / Dong Hoon DOS 🌐 KOR



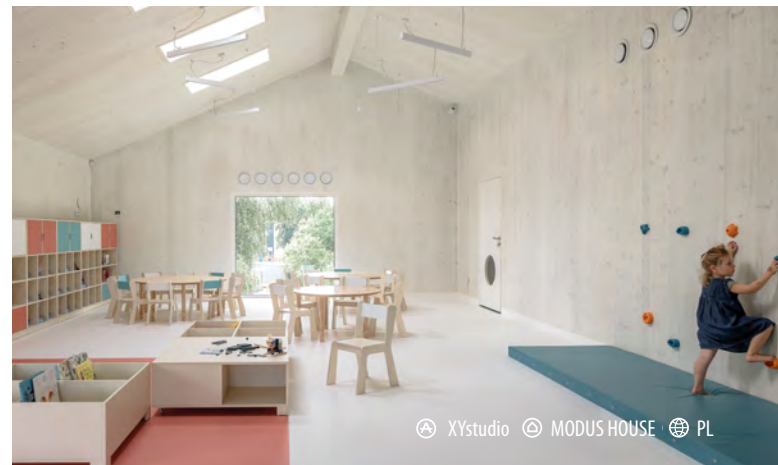
czechia

Studio Apropos Architects 🌐 JP



www.novatop-system.com

Prodesi / Domesi 🌐 CZ



XYstudio MODUS HOUSE 🌐 PL

Manufacturer: AGROP NOVA a.s.
 Ptenský Dvorek 99
 798 43 Ptení • Czech Republic
 tel.: +420 777 011 651
 novatop@agrop.cz



Certificates:



Reference



Download

